

Meaning of different fonts:

Format		Meaning
Description	Example	
bracketing and bold	<content>	Menu of software
Bold	content	Characters of software's interfaces, window, dialogs and etc.
Bold and Italic	<i>content</i>	Other important words or sentence except three above.
Italic and underline	<u><i>content</i></u>	File or folder directory on the computer

Installation

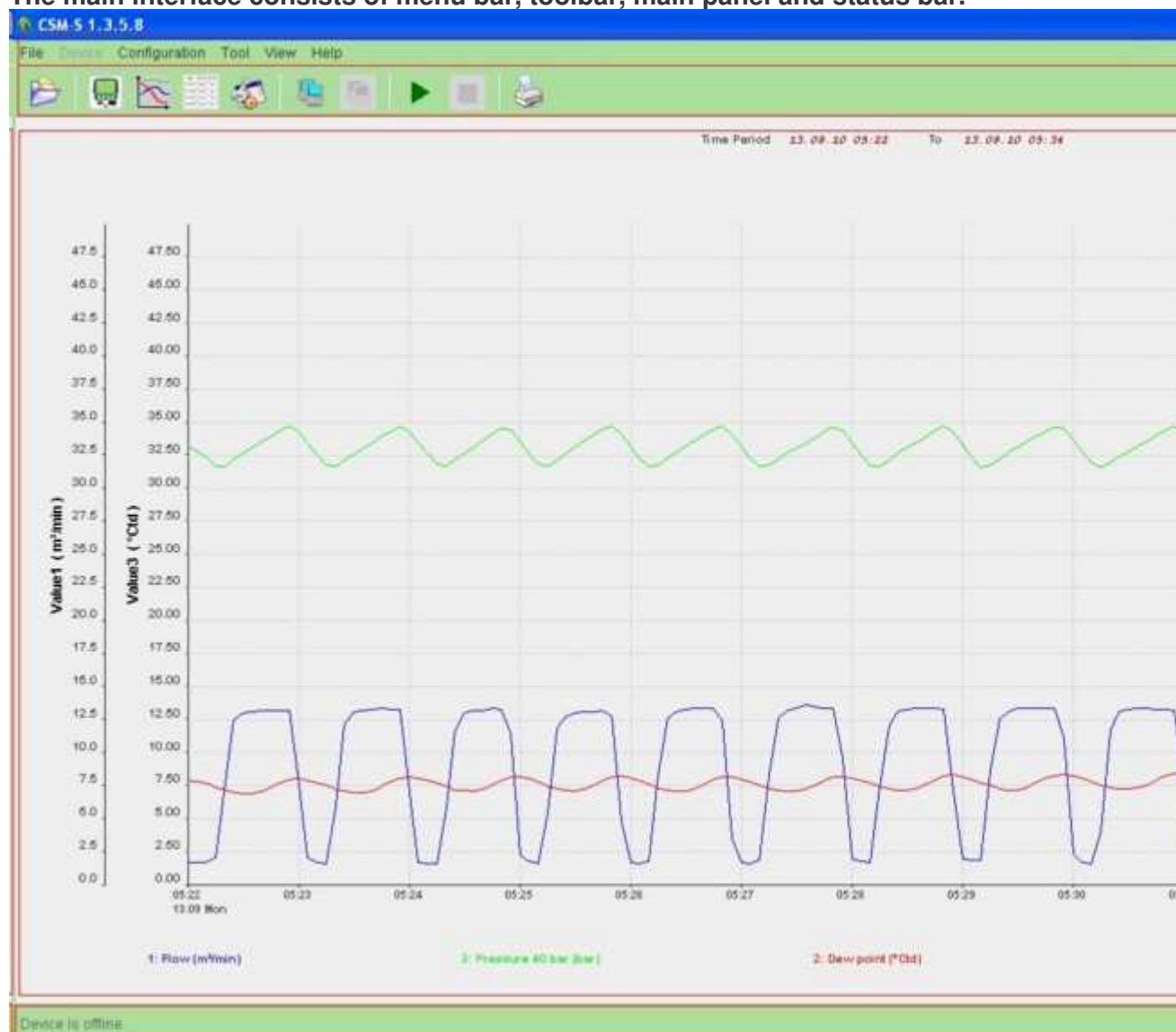
After successful installation of CS-Monitor single (CSM-S) there are a couple of steps required for the setup of the whole system in order to get the communication with the measurement device running and the measurement device configured. All configuration has to be done just once after installation or if there are any changes in the installation. In general all settings are stored and don't need to be repeated again.

Main Interface Overview



Main Interface Overview

The main interface consists of menu bar, toolbar, main panel and status bar.



Menu bar contains six menus, which allows different operations. See section **File menu** for

detailed descriptions of these menus.

Tool bar replicates most menu functions, but the buttons provide quick access to the basic features of the program. To see what a button does, hold the mouse over it for a moment and brief help will appear, explaining that button's function.

Main panel displays a simulated panel meter in Online view, a graph in [Graphic view](#) and a table in [Table view](#).

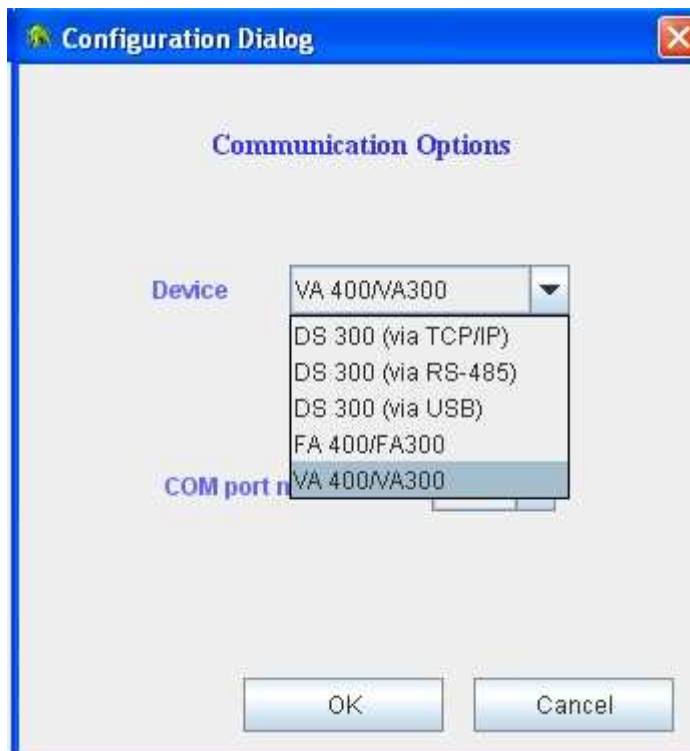
Status bar displays the status of the device the program is communicating with.

Communication setup



Communication setup

Select in the menu **<Configuration - Communication>** which will pop up the dialogue below.



Communication channel

CSM-S supports various communication channels:

1. **Ethernet**: the measurement device are connected directly to the LAN.
2. **RS-485**: the measurement devices are connected to a RS-485 network and through a RS-485/USB converter to the PC. In this case please select the proper **COM port** as well (only required for RS-485)
3. **DS 300 (via USB)**: one DS 300 is connected to USB port of PC.
4. **FA 400/FA 300**: connect CS dew point sensor
5. **VA 400/VA 300**: connect CS flow sensor

COM port number

This selection is only required for **RS-485**, **FA 400/FA 300**, **VA 400/VA 300**. It's no need to select COM port number for **USB** and **Ethernet** connection. See section [Find COM port number](#) if you don't know which number should be selected.

FA and VA connection



FA and VA connection

Besides communication with DS 300 via Ethernet, RS-485 and USB, CSM-S can also be used to communicate with dew point / flow sensor from CS Instruments. To communicate with sensors directly, user needs a service kit (order number: [0554 2004 / 0554 2005](#)). The service kit is used to connect dew point / flow sensor to the computer.



Communication channel

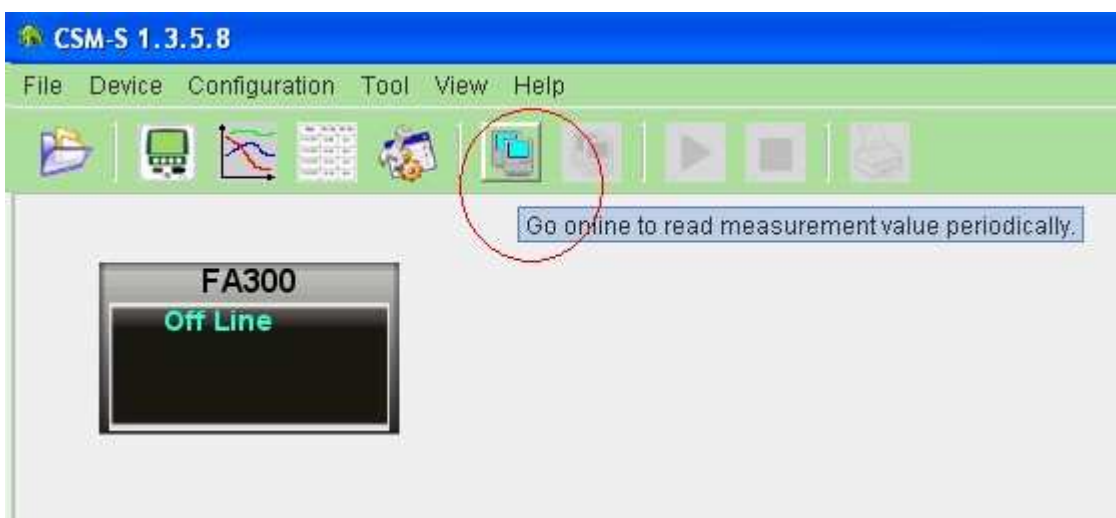
- Select **FA 400/FA 300** if a dew point sensor is connected;
- Select **VA 400/VA 300** if a flow sensor is connected.

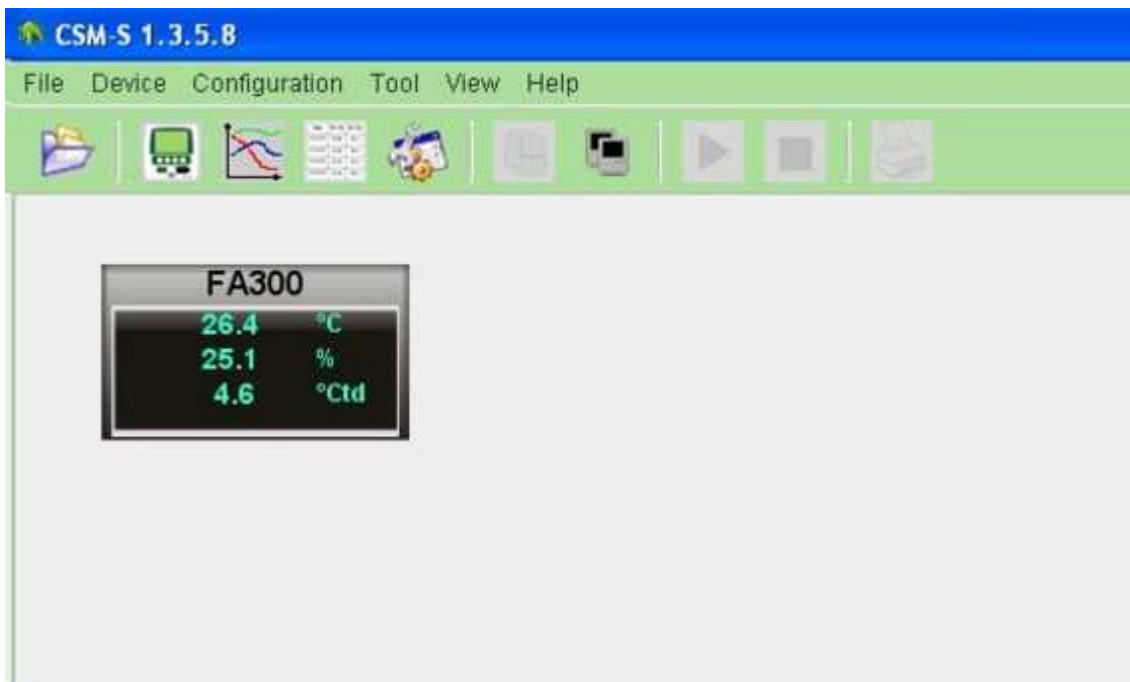
COM port number

Select correct COM port number for communication. See section [Find COM port number](#) if you don't know which number should be selected.



Click **OK** and CSM-S will be ready to communicate with dew point / flow sensor.
To get online value, simply click **<Device - Go Online>** or click the shortcut key in the **tool bar**.





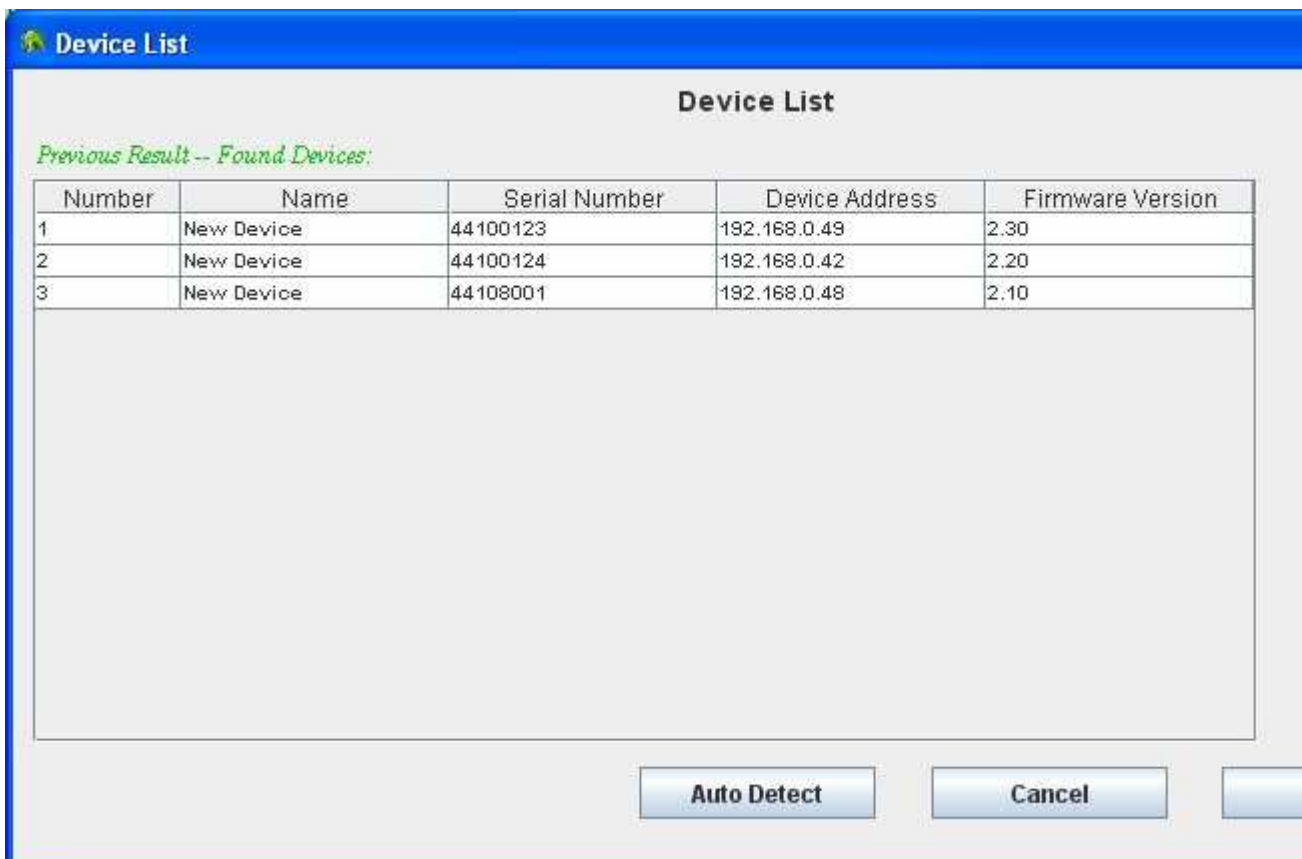
Besides online measurement, user can do online recording. For details please see the section **Data recording**.

Device list



Device List

After selecting the proper communication channel, the software will check which and how many devices are connected. For this purpose the menu function **<Configuration - Device list>** has to be selected.

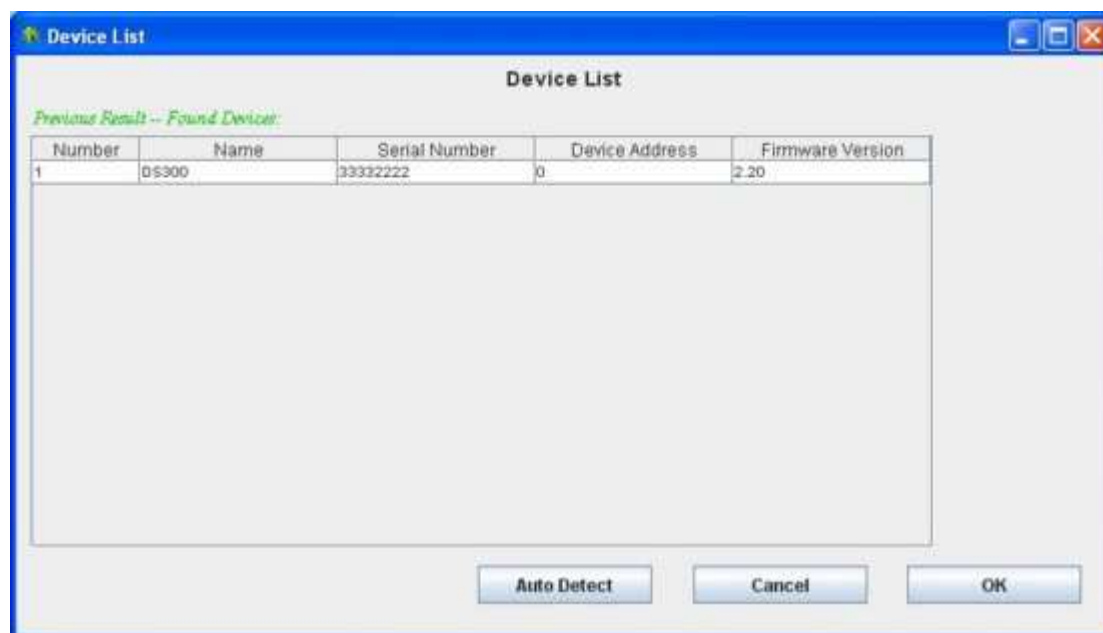


By pressing the button **Auto Detect** CSM-S will search for all connected devices. This may take a few seconds. All detected devices will be listed in the **device list**.

Number	This is a running number assigned by CSM-S
Name	A description of the measurement device which has been assigned to the device through a specific configuration software
Serial Number	Serial number of the measurement device detected
Device Address	For RS-485 network CSM-S will assign a unique address automatically which is required for the communication. For Ethernet connection, the device will return the IP-address.
Firmware version	The firmware of the connected device.

It's strongly advised for all communication through Ethernet (LAN) to use static IP-addresses for the connected measurement devices. Only through this a stable communication can be ensured. Please refer to the documentation of how to assign IP-addresses.

USB connection

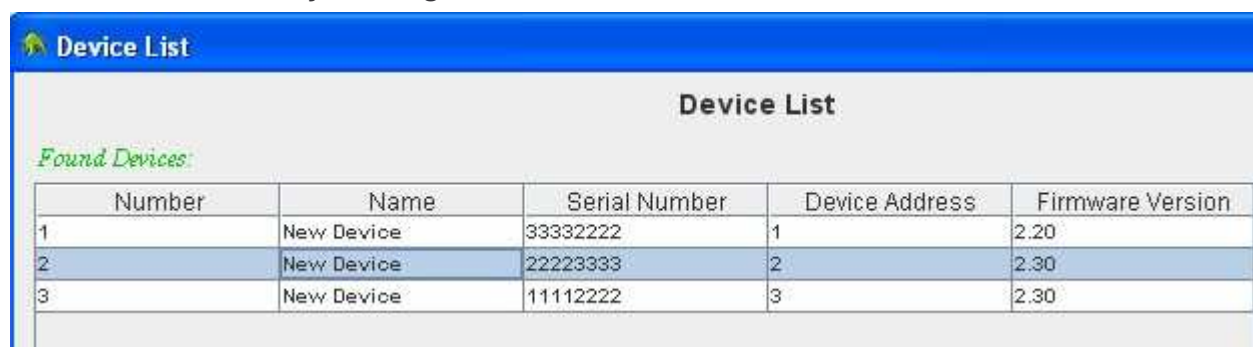


Simply click **OK** to enter into channel list.

RS 485 and Ethernet connection

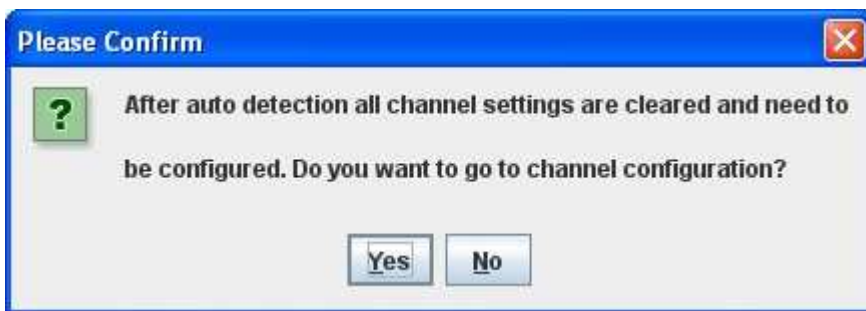
Up to 10 devices can be detected and shown in the list for RS 485 and Ethernet connection, user can select one device from the list and connect it.

1. Select the device by clicking it



Background of the device will be changed blue when it is selected.

2. Press **OK** button to get following window



Press **Yes** to enter into channel list;
 Press **No** if user wants to detect again.

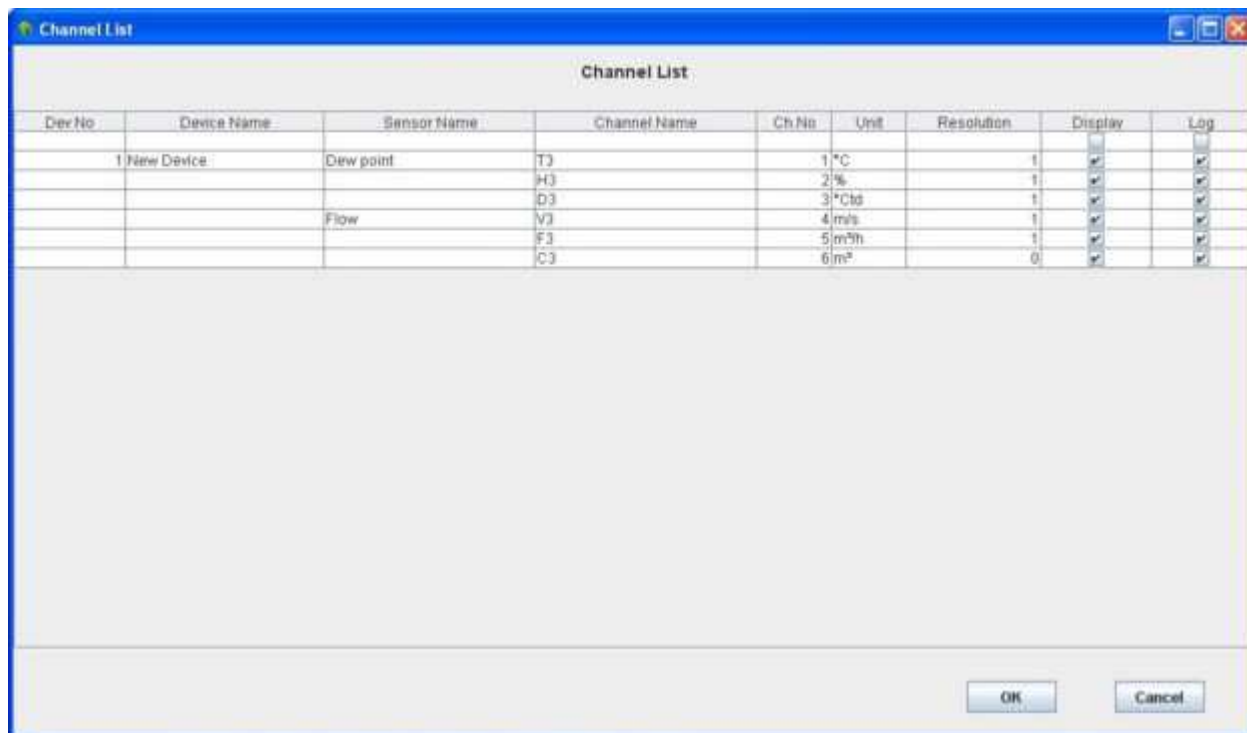
Channel list



Channel list

The channel list is the basic structure of how CSM-S is organizing the various measurement channels. Select from the menu **<Configuration - Channel List>**. At first let's clarify some terms for better understanding:

Device	Is a measurement device (DS 300), which has several sensors connected and each sensor may have several measurement channels
Sensor	A sensor is a physical sensor (pressure, flow, dew point) which may have several measurement values (channels)
Channel	A channel is a synonym for one measurement value which comes from a sensor



CSM-S will show all channels of connected DS 300. As usually not all measurement channels are important and too many channels may confuse the operator, certain channels can be selected for certain functions.

Device No	A number assigned to each detected device by CSM-S
-----------	--

Device Name	A description of the measurement device which has been assigned to the device through a specific configuration software
Sensor name	Sensor name can be assigned by the user. Double click in the specific sensor name and enter a description.
Channel name	Channel names are defined in the configuration of the measurement device (DS 300)
Ch. No	Channel number assigned by CSM-S. Every measurement channel has a unique number.
Unit	Measurement unit
Resolution	Resolution of the measurement value
Display	Tick this box if the channel should be displayed in the online view on the main screen.
Log	Tick this box if this channel should be recorded when user does on-line reording.

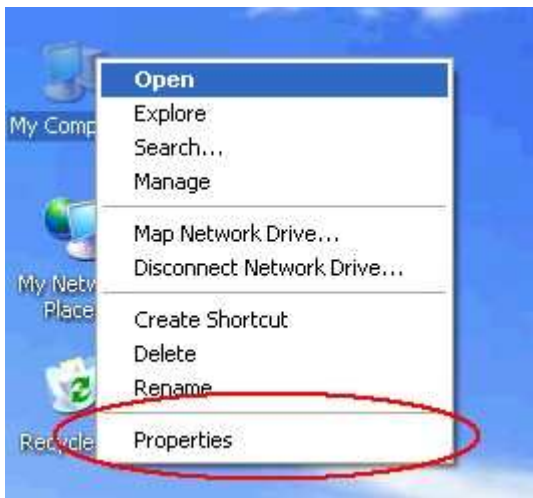
Find COM port number



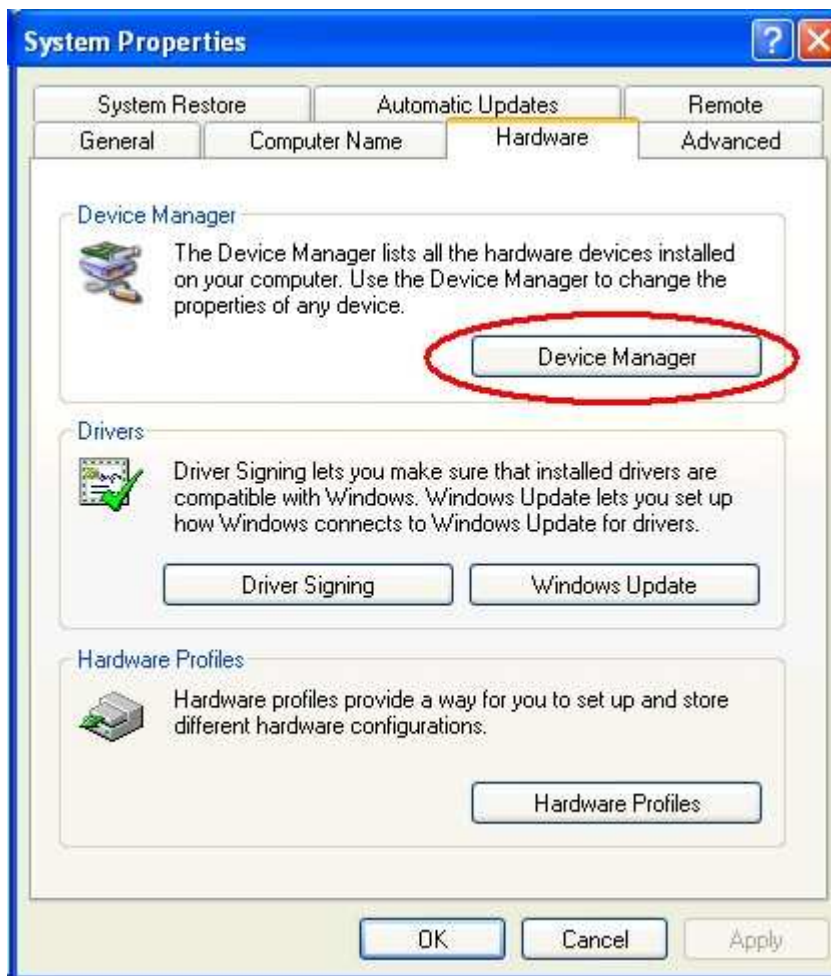
Find COM port number

To communicate via **RS 485** or **service kit**, correct COM port number has to be selected. Please follow this guide to find out the correct number.

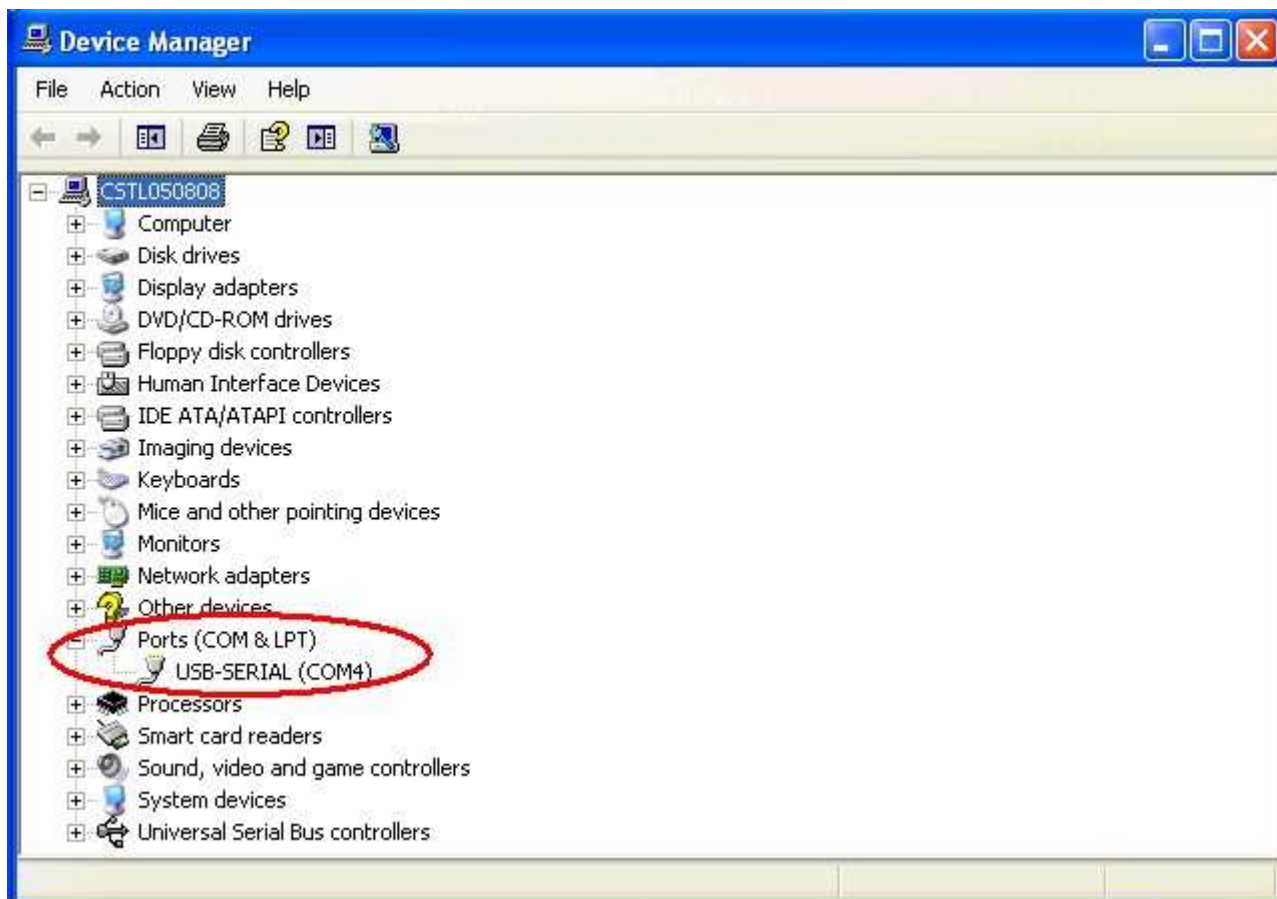
Step1: Right click at My Computer and click "Properties"



Step2: Go to "Hardware" tag and click "Device Manager"



Step3: Expand "Ports (COM & LPT)" to find the number



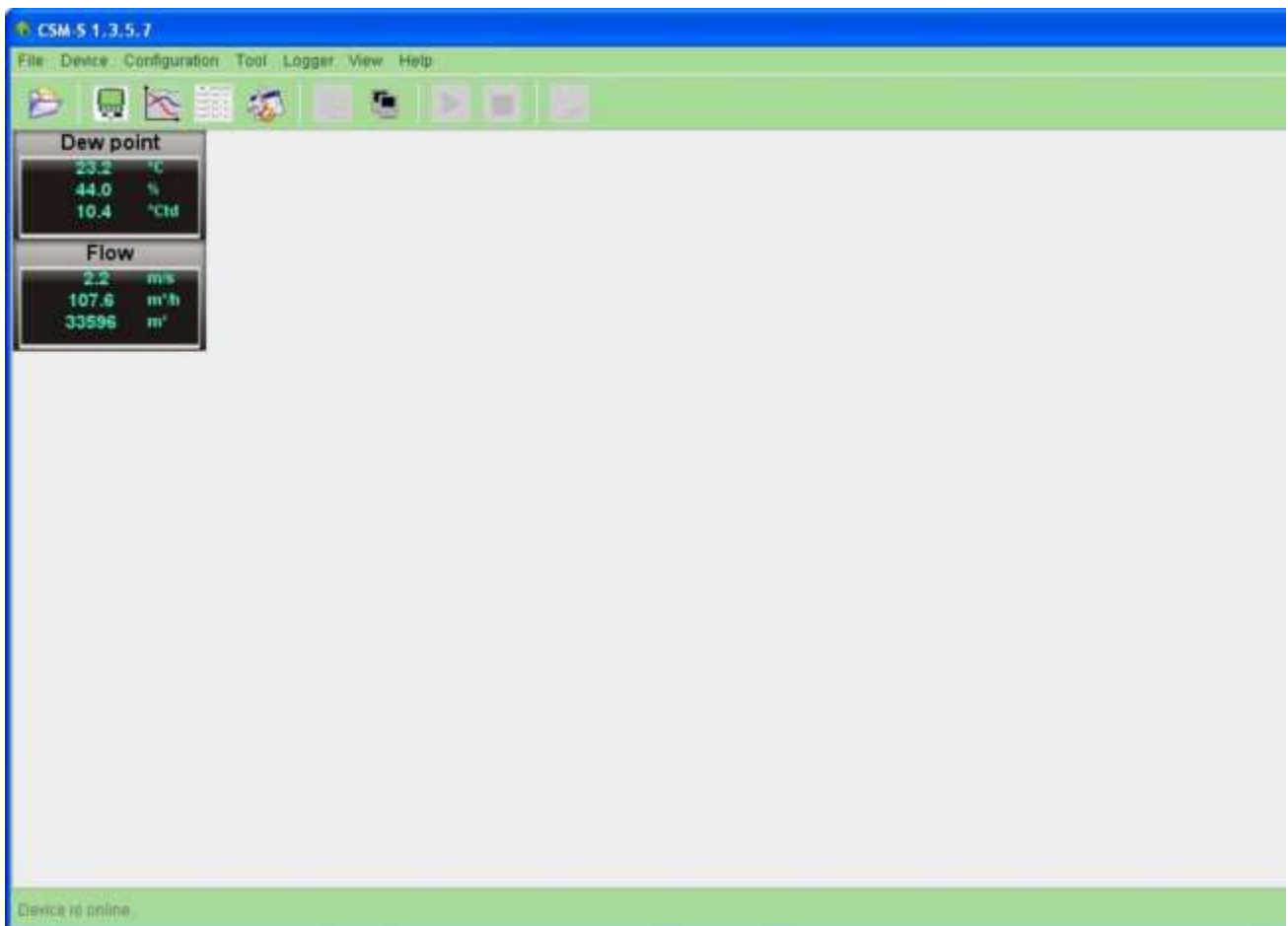
Online measurement



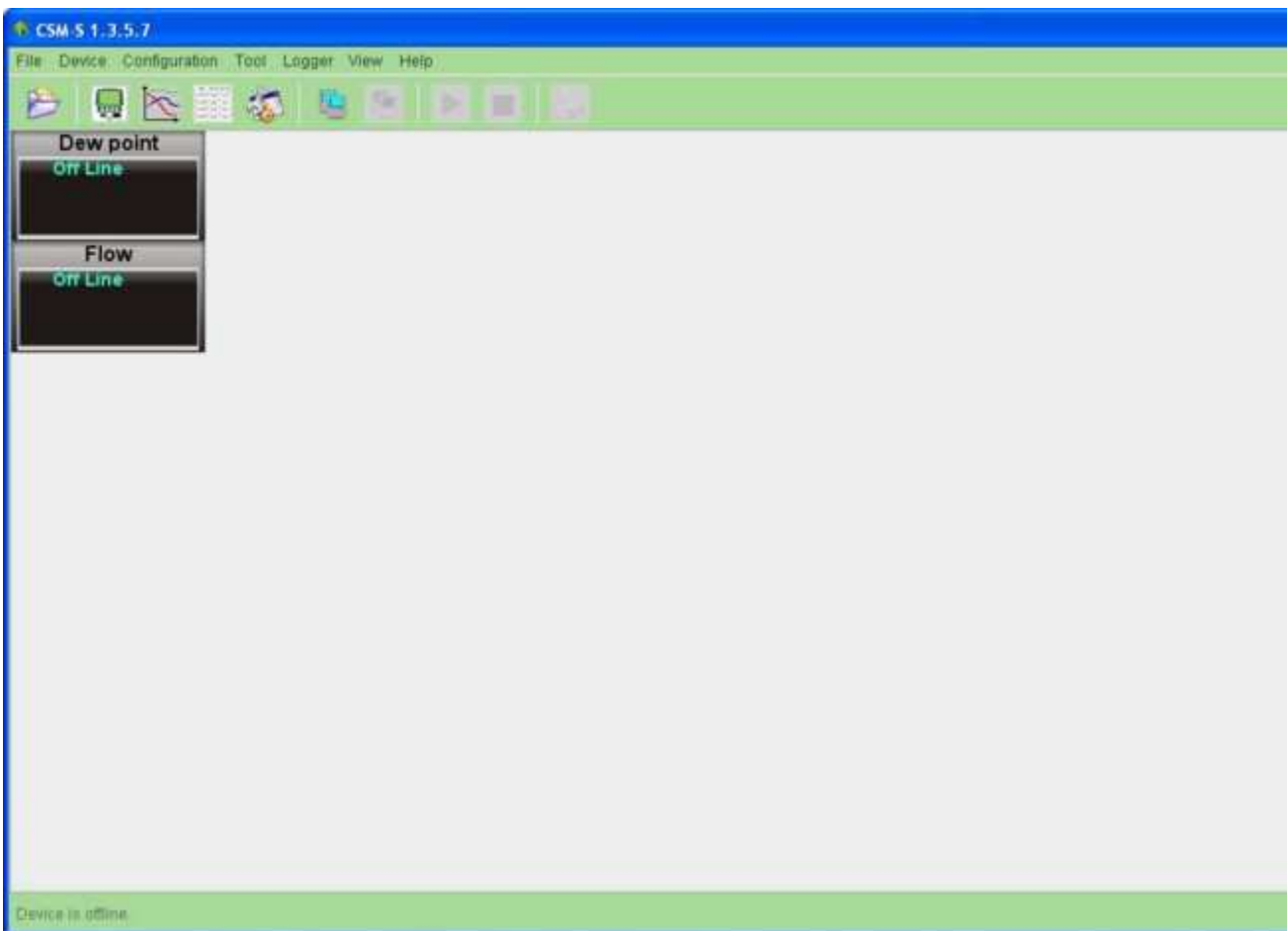
Data recording

Online measurement

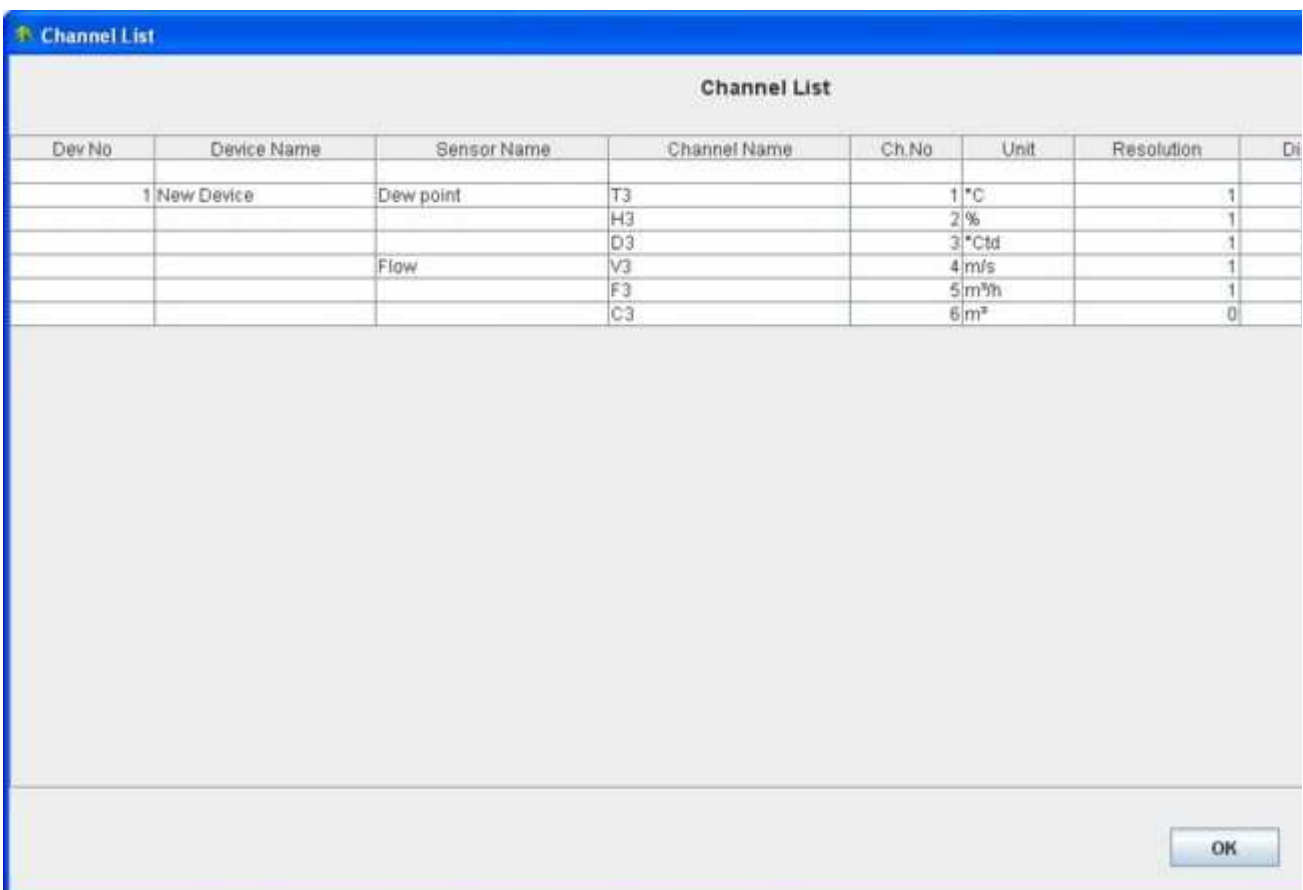
Select in the menu **<Device - Go online>** to start online measurement.



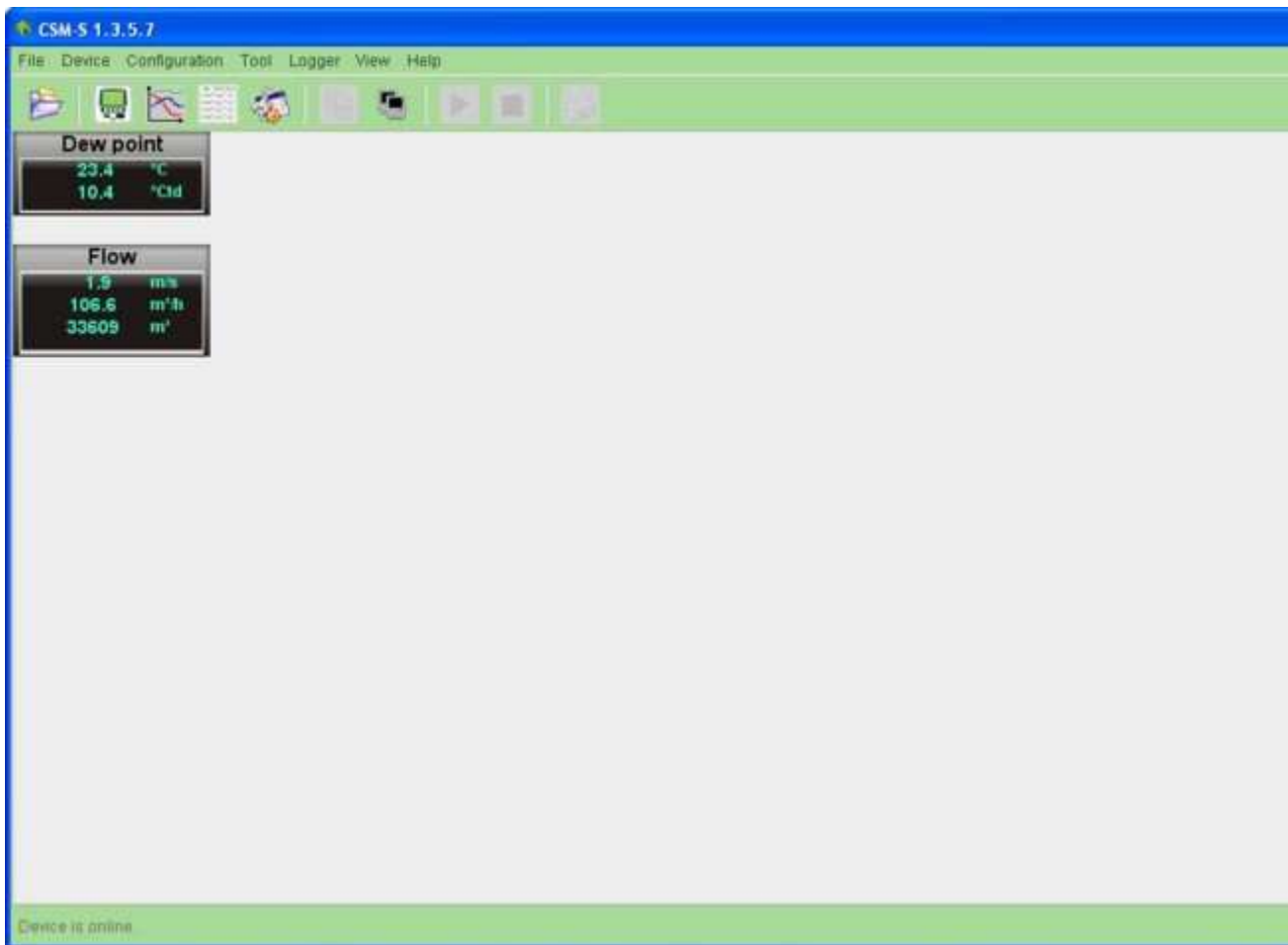
Select in the menu **<Device - Go offline>** to stop online measurement.



User can display wanted channels by ticking or removing tick at **<Configuration - Channel list>**. It can only be done when all device are offline.



As an example, we cancel ticking relative humidity (%) channel for dew point (show above). Then we will get following new online measurement.



Reading logger



Reading logger

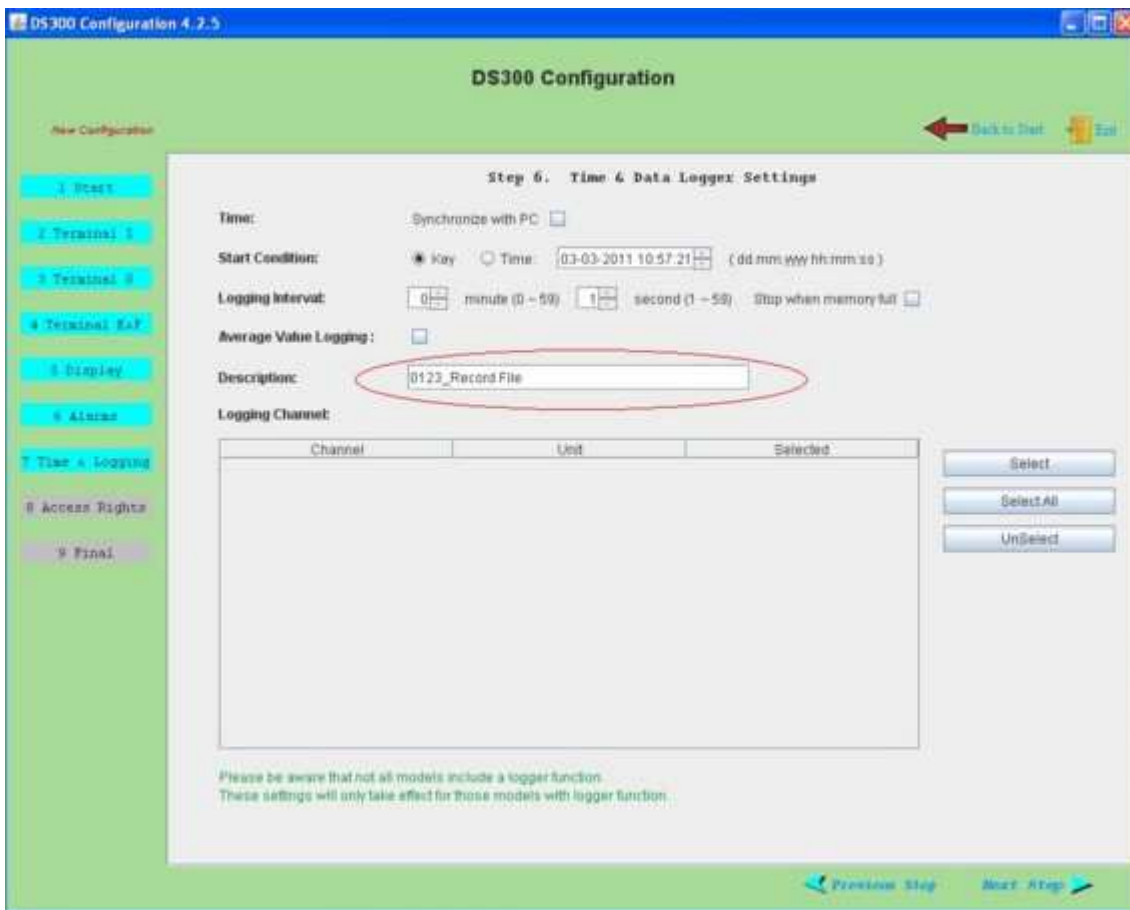
Select in the menu **<Logger - Read Logger>** to **Read Logger** window as shown below.

No.	Start Time	End Time	No Of Channels	Values Per Channel	Protocol Description
1	24.02.2011 12:07:43	25.02.2011 17:13:31	6	104709.0123_Record File	
2	02.03.2011 18:01:38		6	58824.0123_Record File	

Select one protocol from the list and click **Read** to read it;
To read all protocols, please click **Read All**.

Explanation in details about Logger Memory Protocol Header List

Start time	Time and date that logger was started
End time	Time and date that logger was stopped. If the logger is running, there will be no end time
No Of Channels	It means how many channels the device has. For example, one dew point and flow sensor is connected to the device, then No of Channels will be 6 (temperature, relative humidity, dew point, velocity, flow and total consumption).
Values Per Channel	Recorded values of every channel
Protocol description	Description of the protocol. It is the description that user inputs when he configures the device by DS 300 Configuration software.



Speed of reading logger

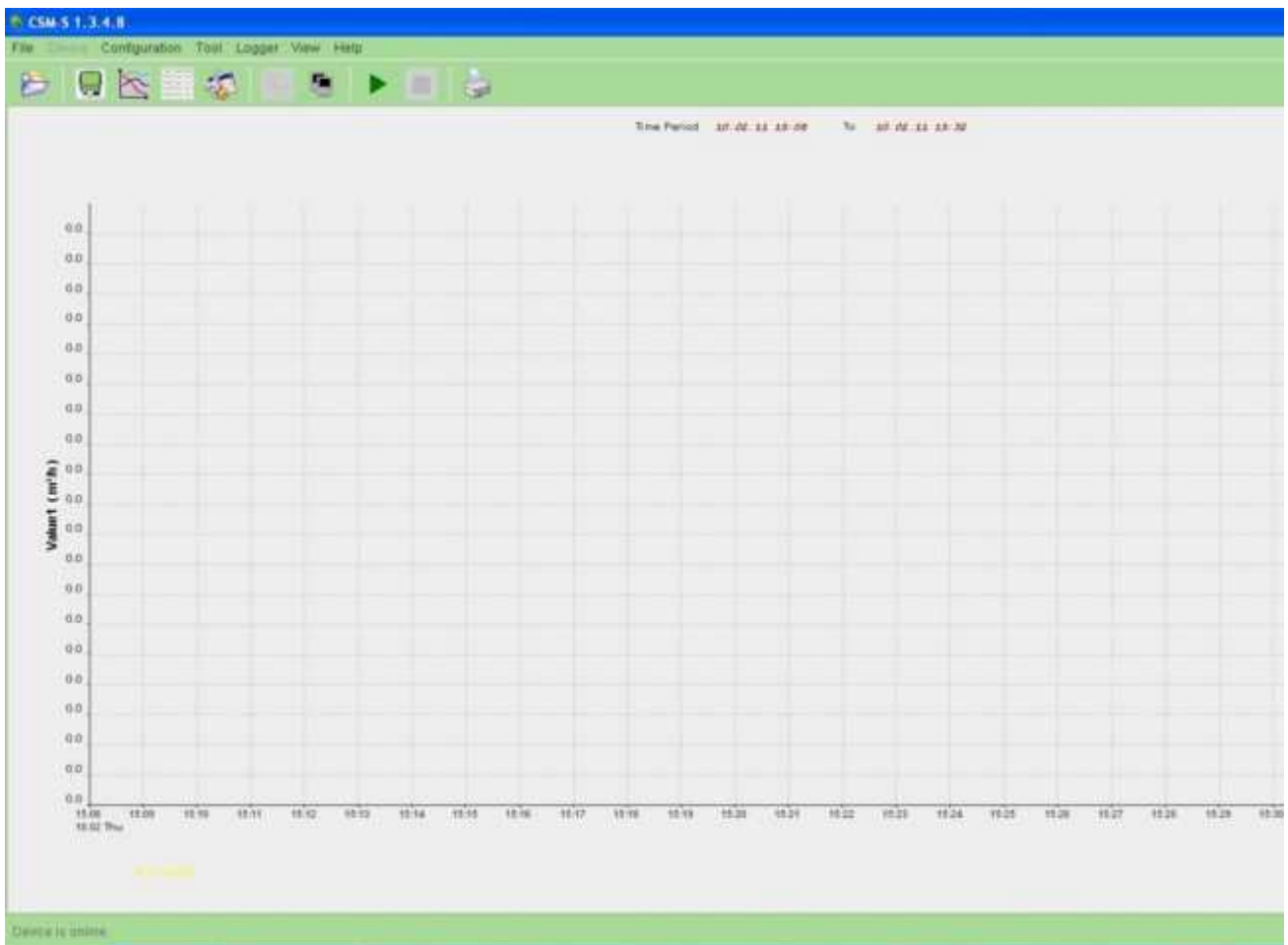
Communication Channel	Speed
RS-485	up to 1000 values per second
Ethernet	up to 1000 values per second
USB	up to 2500 values per second

PC recording

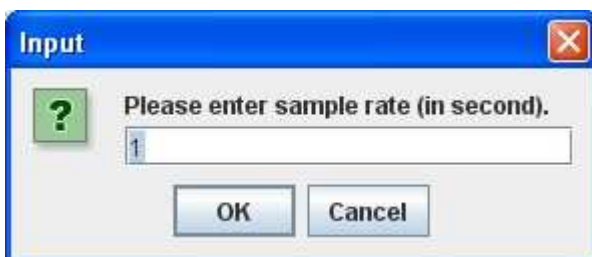


PC recording

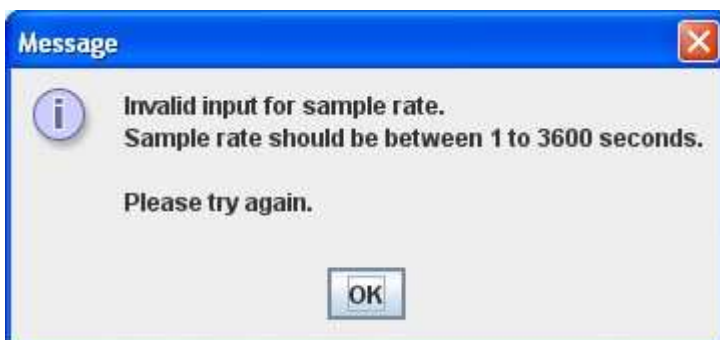
Select in the menu **<View - Graphic view>** to get graphic view as shown below.



Select in the menu **<Tool - Start Recording>** to pop up a following dialog.

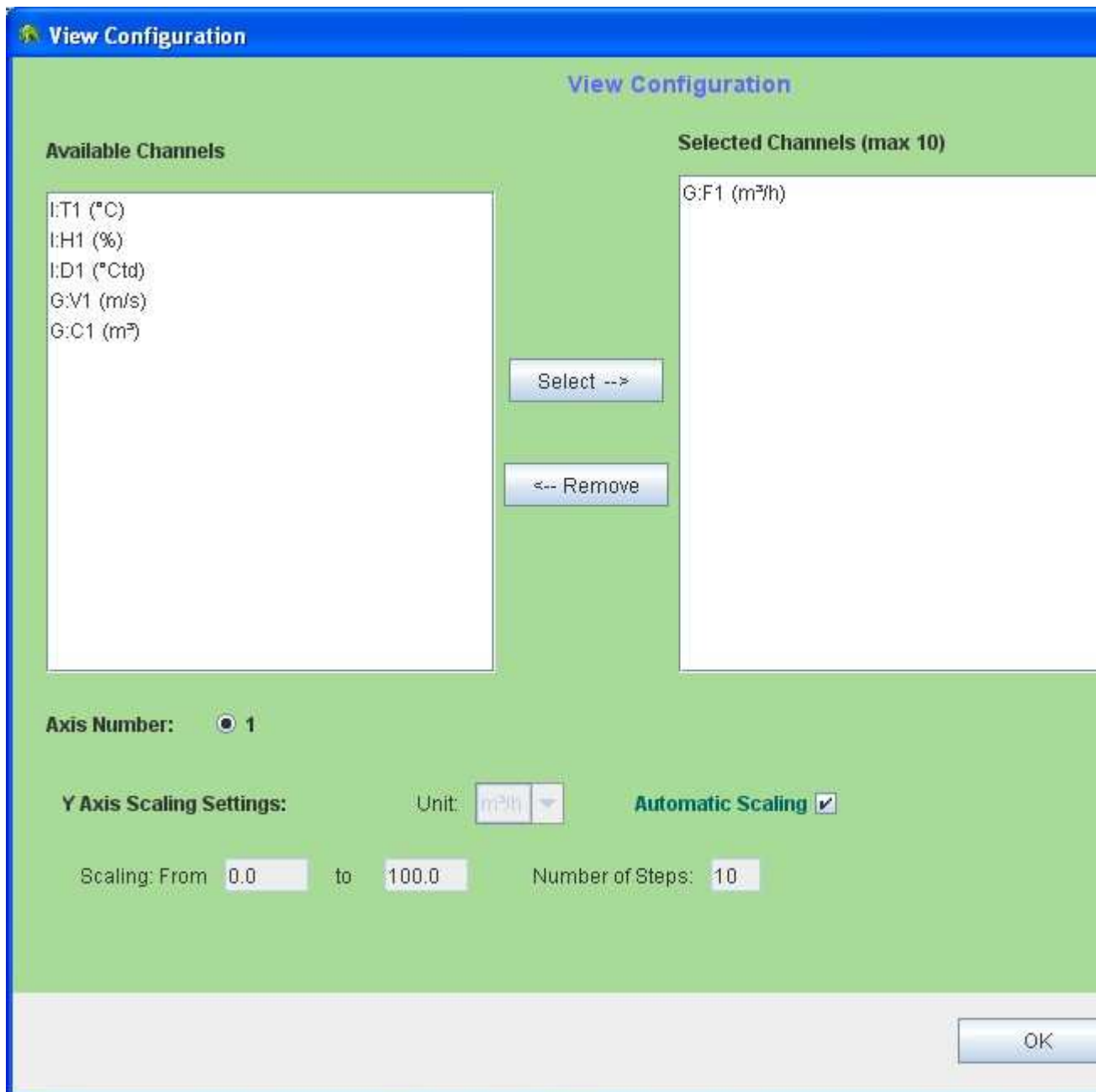


Input a number (1 - 32767) and press **OK** button to start **PC recording**.



After several seconds loading, CSM-S will show **real time value** on the screen.

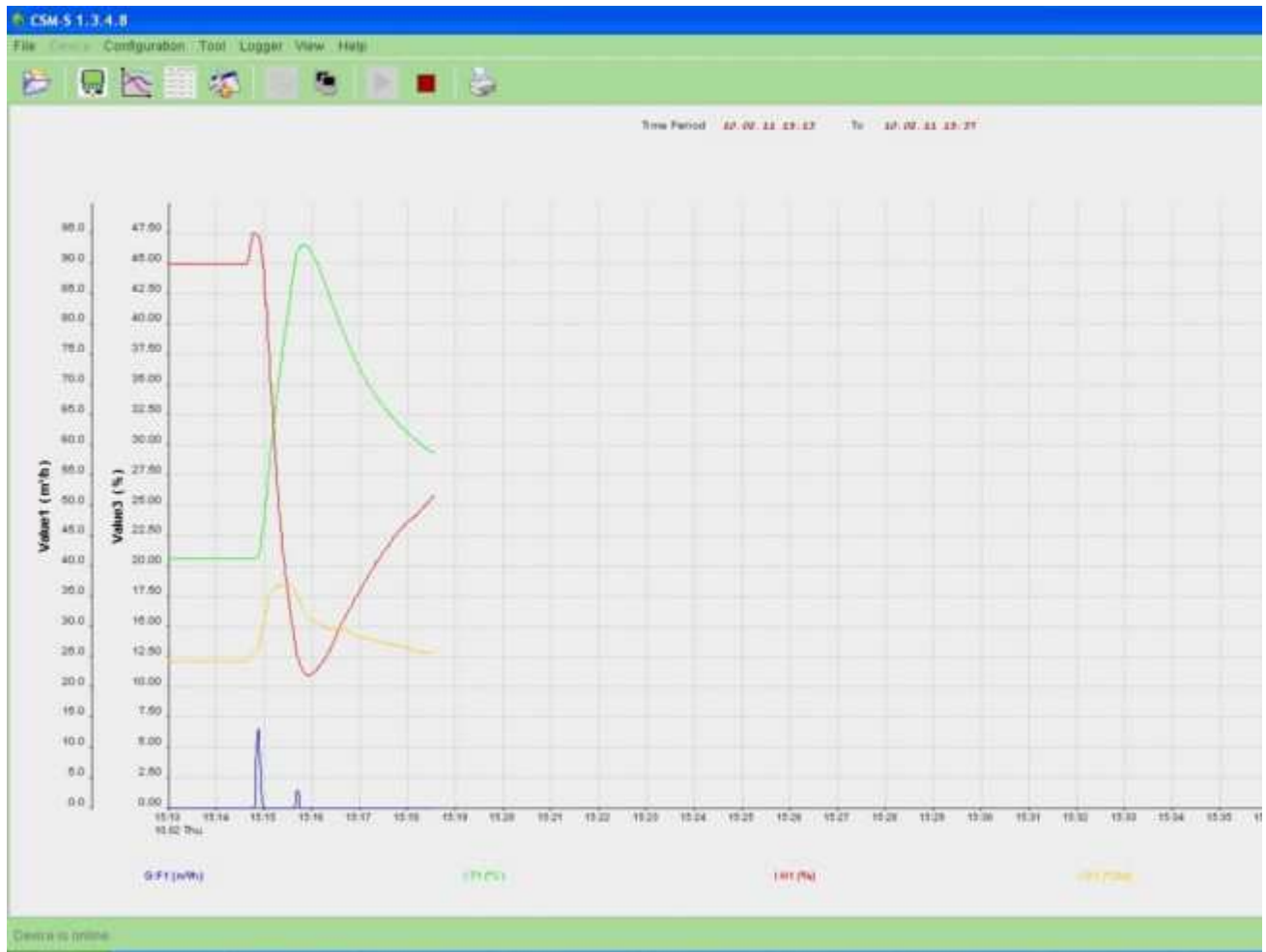
Typically, CSM-S will not show all channels. In order to show more channels, user can right click in graphic showing area and click **<View - Configuration>** to get **View Configuration** window as shown below.



Available Channels	Channels that user has selected at <Configuration - Channel list> but are not shown in graphic. User can select one channel here by left click. He can also select several channels by Ctrl + left click or Shift + left click, even all channels by Ctrl + A
Selected Channels (max 10)	Channels that are showing in graphic. User can move them to Available Channels
Change Color	Select a channel and press this button to change the color of the line in graphic
Change Style	Select a channel and press this button to change the style of the line in graphic
Y Axis Scaling Settings	Remove Automatic Scaling and input user's scaling to re-scale the Y Axis in graphic.
Number of Steps	CSM-S will divide Y Axis into several equal steps according the number user inputs here

After finishing setting view configuration, CSM-S will record data and show **real time value** in

both graphic view and table view. User can switch between these two views by selecting in the menu **<View - Graphic View>** and **<View - Table View>**.



CSM 5.1.3.4.8

File Configuration Tool Logger View Help

Table View

Time	LT1 (G)	PH (%)	LD1 (CMB)	QV1 (mm)	Q#1 (m³/h)	Q1 (m³)
10.02.2011 15:20:03	32.5	20.918	12.3	0	0	33328
10.02.2011 15:20:02	32.5	20.999	12.3	0	0	33328
10.02.2011 15:20:01	32.6	20.832	12.3	0	0	33328
10.02.2011 15:20:00	32.6	20.798	12.3	0	0	33328
10.02.2011 15:19:59	32.6	20.788	12.3	0	0	33328
10.02.2011 15:19:58	32.7	20.729	12.4	0	0	33328
10.02.2011 15:19:57	32.7	20.699	12.4	0	0	33328
10.02.2011 15:19:56	32.7	20.670	12.4	0	0	33328
10.02.2011 15:19:55	32.7	20.640	12.4	0	0	33328
10.02.2011 15:19:54	32.8	20.611	12.4	0	0	33328
10.02.2011 15:19:53	32.8	20.568	12.4	0	0	33328
10.02.2011 15:19:52	32.8	20.510	12.4	0	0	33328
10.02.2011 15:19:51	32.9	20.401	12.4	0	0	33328
10.02.2011 15:19:50	32.9	20.452	12.4	0	0	33328
10.02.2011 15:19:49	32.9	20.424	12.4	0	0	33328
10.02.2011 15:19:48	32.9	20.395	12.4	0	0	33328
10.02.2011 15:19:47	33.0	20.352	12.4	0	0	33328
10.02.2011 15:19:46	33.0	20.323	12.4	0	0	33328
10.02.2011 15:19:45	33.0	20.295	12.4	0	0	33328
10.02.2011 15:19:44	33.0	20.267	12.4	0	0	33328
10.02.2011 15:19:43	33.1	20.212	12.4	0	0	33328
10.02.2011 15:19:42	33.1	20.184	12.5	0	0	33328
10.02.2011 15:19:41	33.2	20.140	12.5	0	0	33328
10.02.2011 15:19:40	33.2	20.109	12.5	0	0	33328
10.02.2011 15:19:39	33.2	20.109	12.5	0	0	33328
10.02.2011 15:19:38	33.2	20.043	12.5	0	0	33328
10.02.2011 15:19:37	33.3	20.010	12.5	0	0	33328
10.02.2011 15:19:36	33.3	27.976	12.6	0	0	33328
10.02.2011 15:19:35	33.3	27.940	12.5	0	0	33328
10.02.2011 15:19:34	33.4	27.852	12.5	0	0	33328
10.02.2011 15:19:33	33.4	27.817	12.5	0	0	33328
10.02.2011 15:19:32	33.4	27.792	12.5	0	0	33328
10.02.2011 15:19:31	33.5	27.746	12.5	0	0	33328
10.02.2011 15:19:30	33.5	27.711	12.5	0	0	33328
10.02.2011 15:19:29	33.5	27.675	12.5	0	0	33328
10.02.2011 15:19:28	33.6	27.622	12.5	0	0	33328
10.02.2011 15:19:27	33.6	27.587	12.5	0	0	33328
10.02.2011 15:19:26	33.9	27.553	12.5	0	0	33328
10.02.2011 15:19:25	33.7	27.484	12.5	0	0	33328
10.02.2011 15:19:24	33.7	27.452	12.5	0	0	33328
10.02.2011 15:19:23	33.7	27.420	12.6	0	0	33328
10.02.2011 15:19:22	33.8	27.354	12.6	0	0	33328

Device is online

Select in the menu **<Tool - Stop Recording>** to stop PC recording and save the data into database.

Save Data

This is recorded file started on 10.02.2011 15:13:18.

Please enter a file name or accept default name.

Save As:

CSM-S will save the file into the database which user has set at **<File - Set Database Directory>**.

Graphic view



Data Analyzes

Graphic view

One important aspect of analyzing measurement data is to look at the graphics view over

time. This shows easier critical situations which require the attention. The graphic analyzes in CSM-S is a powerful tool. It supports following features:

- Up to 4 value axis
- Scaling of the value axis automatically or manually
- Selection of specific channels for the view
- Free text entering (right mouse click)
- Zoom in and out (use magnifier buttons)
- Time scrolling (use arrow buttons)
- Show the graphic at a user fixed time period (<View - Select time period>)

Of course the graphs can be printed <File - Print> or stored as a pdf file. See [File menu - Printing](#) section for details.



Note:

- If one screen can not show the whole graphic, CSM-S will show the graphic for last day when user loads the csd file.

Table view



Table view

CSM-S 1.3.4.8

File Device Configuration Tool Logger View Help

Time Period 23.10.09 06:12 To 30.10.09 06:15

Time	1: Strömung (m/s)	1: Durchfluss (m³/min)	1: Verbrauch (m³)	2: Strömung (m/s)	2: Durchfluss
30.10.2009 17:15:30	23.9	151.3	1372721	35.1	125.1
30.10.2009 17:15:26	23.5	148.8	1372712	34.9	124.3
30.10.2009 17:15:22	23.4	148.1	1372702	34.8	124.0
30.10.2009 17:15:18	23.6	149.2	1372693	35.3	125.6
30.10.2009 17:15:14	23.9	151.6	1372683	35.7	127.3
30.10.2009 17:15:10	24.2	153.1	1372674	36.1	128.4
30.10.2009 17:15:06	24.4	154.4	1372664	35.6	126.8
30.10.2009 17:15:02	24.0	151.7	1372652	35.1	125.0
30.10.2009 17:14:58	23.5	148.9	1372642	34.7	123.8
30.10.2009 17:14:54	24.1	152.7	1372633	34.2	121.5
30.10.2009 17:14:50	24.3	153.8	1372623	33.9	120.7
30.10.2009 17:14:46	24.4	154.8	1372614	33.6	119.5
30.10.2009 17:14:42	24.4	154.5	1372604	33.3	118.5
30.10.2009 17:14:38	24.1	151.3	1372594	33.0	118.0
30.10.2009 17:14:34	24.1	151.3	1372579	33.4	118.8
30.10.2009 17:14:30	24.2	153.5	1372570	33.1	117.9
30.10.2009 17:14:26	24.3	154.2	1372560	33.0	117.6
30.10.2009 17:14:22	23.9	151.6	1372550	32.7	116.7
30.10.2009 17:14:18	23.6	149.2	1372541	32.5	116.0
30.10.2009 17:14:14	23.7	150.2	1372531	33.2	118.3
30.10.2009 17:14:10	24.1	152.5	1372522	33.5	118.8
30.10.2009 17:14:06	23.8	150.6	1372512	33.3	118.7
30.10.2009 17:14:02	24.0	151.8	1372500	33.1	118.0
30.10.2009 17:13:58	24.1	152.8	1372491	32.9	116.9
30.10.2009 17:13:54	24.2	153.1	1372481	33.6	119.1
30.10.2009 17:13:50	24.2	153.3	1372469	34.2	121.5
30.10.2009 17:13:46	24.8	157.0	1372459	33.7	120.4
30.10.2009 17:13:42	24.7	156.4	1372449	33.2	118.2
30.10.2009 17:13:38	24.6	155.7	1372439	33.6	119.7
30.10.2009 17:13:34	24.6	155.5	1372429	33.5	119.7
30.10.2009 17:13:30	24.8	156.8	1372420	33.9	120.8
30.10.2009 17:13:26	25.0	158.1	1372405	33.7	120.1
30.10.2009 17:13:22	24.8	156.9	1372395	34.0	121.0
30.10.2009 17:13:18	24.3	153.3	1372385	33.7	120.0
30.10.2009 17:13:14	24.5	154.7	1372375	33.7	120.1
30.10.2009 17:13:10	24.6	156.1	1372365	33.4	119.1
30.10.2009 17:13:06	24.9	157.5	1372355	32.7	116.4
30.10.2009 17:13:02	25.0	158.3	1372345	33.1	118.3
30.10.2009 17:12:58	25.0	158.4	1372335	32.5	115.1
30.10.2009 17:12:54	24.9	157.5	1372323	32.5	116.1
30.10.2009 17:12:50	25.2	159.5	1372313	32.4	115.4
30.10.2009 17:12:46	24.6	157.0	1372303	32.6	116.6

Device is online

In this view the recorded measurement data is displayed in a table. All the values are shown in one page. User can scroll it by horizontal and vertical scroll bar.

User can configure the table view by clicking <View configuration> icon.

CSM-S 1.3.4.8

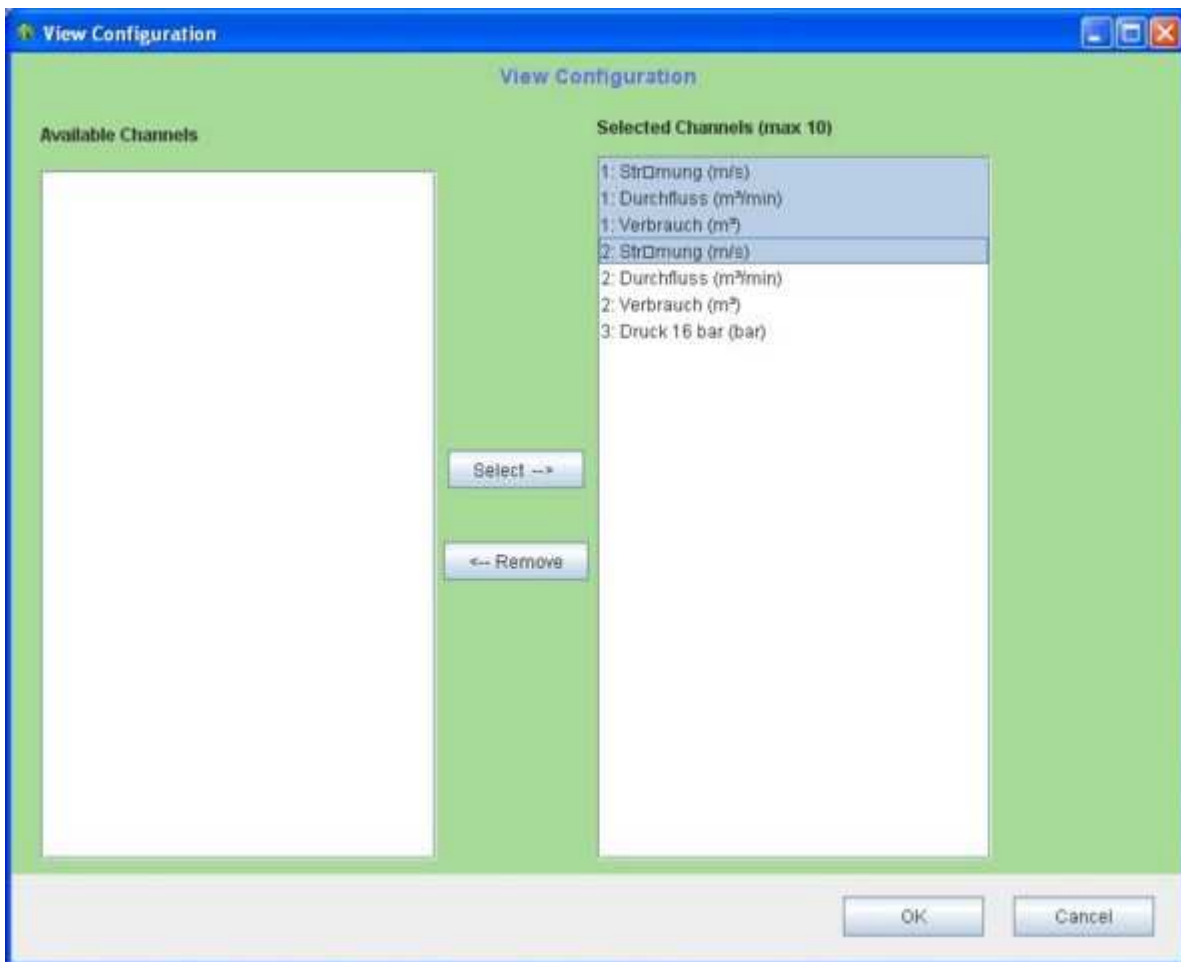
File Device Configuration Tool Logger View Help

View configuration.

Time	1: Strömung (m/s)	1: Durchfluss (m³/min)
30.10.2009 17:15:30	23.9	151.3
30.10.2009 17:15:26	23.5	148.8
30.10.2009 17:15:22	23.4	148.1
30.10.2009 17:15:18	23.6	149.2

Here is an example that we remove other channels and keep three channels to show in the table view.

First step is selecting all the channels you want to remove, as shown below.



For select more than one channel, please use combination key Ctrl + click or Shift + click.

Then click **<--Remove** to move them to **Available Channels** window.

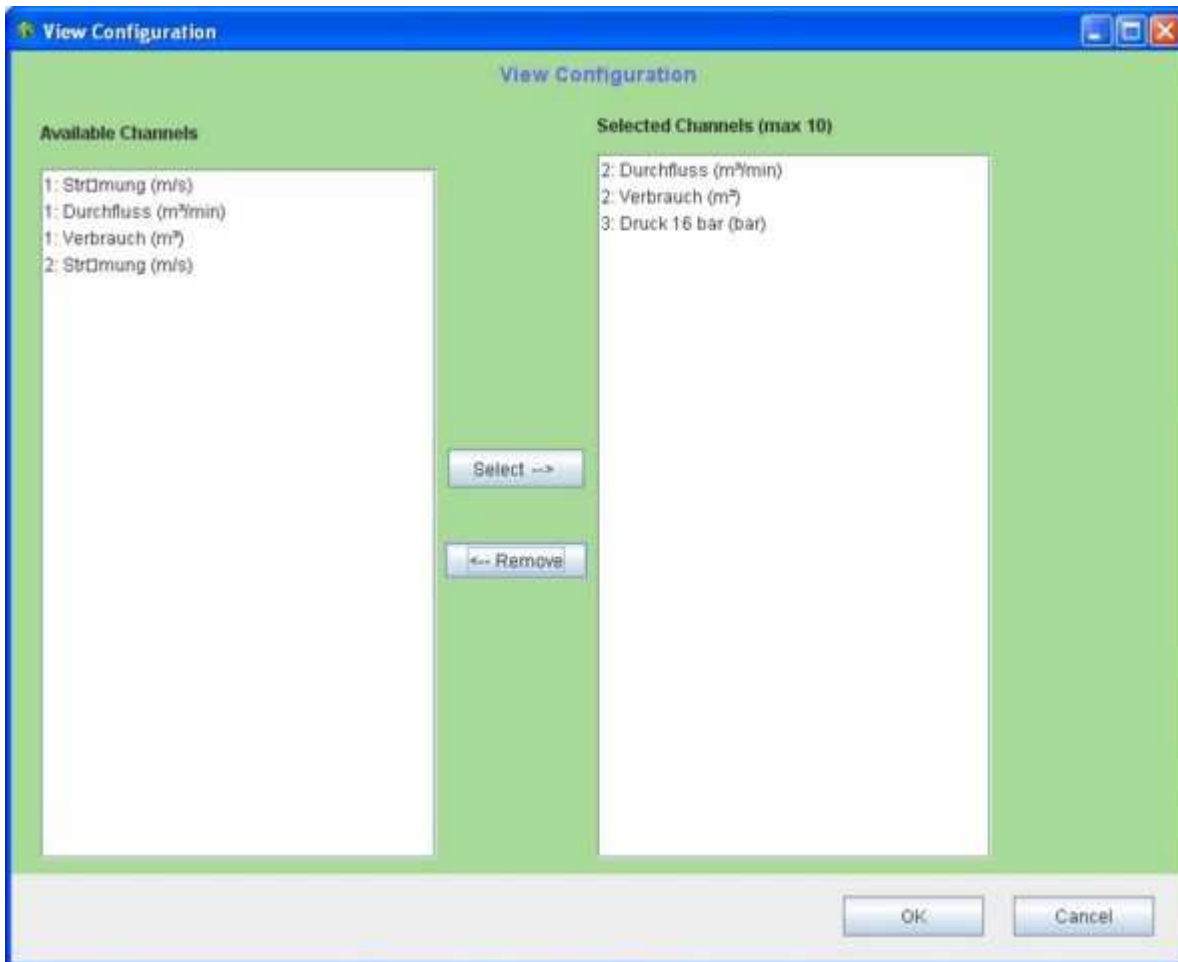


Table view will be updated as shown below.

Time	2. Durchfluss (m³/min)	3. Verbrauch (m³)	3. Druck 16 bar (bar)
08.10.2008 17:16:30	115.1	1549909	0.21
08.10.2008 17:16:36	114.7	1549912	0.21
08.10.2008 17:16:42	114.9	1549916	0.21
08.10.2008 17:16:48	115.6	1549922	0.21
08.10.2008 17:16:54	117.3	1549918	0.21
08.10.2008 17:16:59	126.4	1549926	0.24
08.10.2008 17:16:06	126.0	1549988	0.24
08.10.2008 17:16:02	124.6	1549986	0.24
08.10.2008 17:14:58	122.9	1549982	0.25
08.10.2008 17:14:54	121.9	1549974	0.25
08.10.2008 17:14:50	120.7	1549985	0.25
08.10.2008 17:14:46	119.5	1549997	0.25
08.10.2008 17:14:42	119.7	1549949	0.24
08.10.2008 17:14:38	118.0	1549942	0.23
08.10.2008 17:14:34	116.6	1549926	0.22
08.10.2008 17:14:30	117.9	1549927	0.21
08.10.2008 17:14:26	117.7	1549926	0.20
08.10.2008 17:14:22	116.7	1549910	0.19
08.10.2008 17:14:18	116.0	1549902	0.18
08.10.2008 17:14:14	115.7	1549794	0.18
08.10.2008 17:14:10	115.0	1549756	0.17
08.10.2008 17:14:06	118.7	1549719	0.16
08.10.2008 17:14:02	116.0	1549771	0.16
08.10.2008 17:13:58	116.0	1549762	0.15
08.10.2008 17:13:54	116.1	1549754	0.14
08.10.2008 17:13:50	115.5	1549747	0.13
08.10.2008 17:13:46	115.4	1549739	0.12
08.10.2008 17:13:42	118.2	1549731	0.12
08.10.2008 17:13:38	119.7	1549722	0.11
08.10.2008 17:13:34	119.7	1549714	0.10
08.10.2008 17:13:30	120.6	1549707	0.10
08.10.2008 17:13:26	120.1	1549699	0.09
08.10.2008 17:13:22	121.0	1549692	0.09
08.10.2008 17:13:18	120.0	1549684	0.07
08.10.2008 17:13:14	120.1	1549676	0.07
08.10.2008 17:13:10	119.1	1549669	0.07
08.10.2008 17:13:06	118.4	1549661	0.06
08.10.2008 17:13:02	118.3	1549653	0.04
08.10.2008 17:12:58	116.1	1549645	0.02
08.10.2008 17:12:54	116.1	1549629	0.01
08.10.2008 17:12:50	115.4	1549621	0.00
08.10.2008 17:12:46	112.7	1549613	0.00

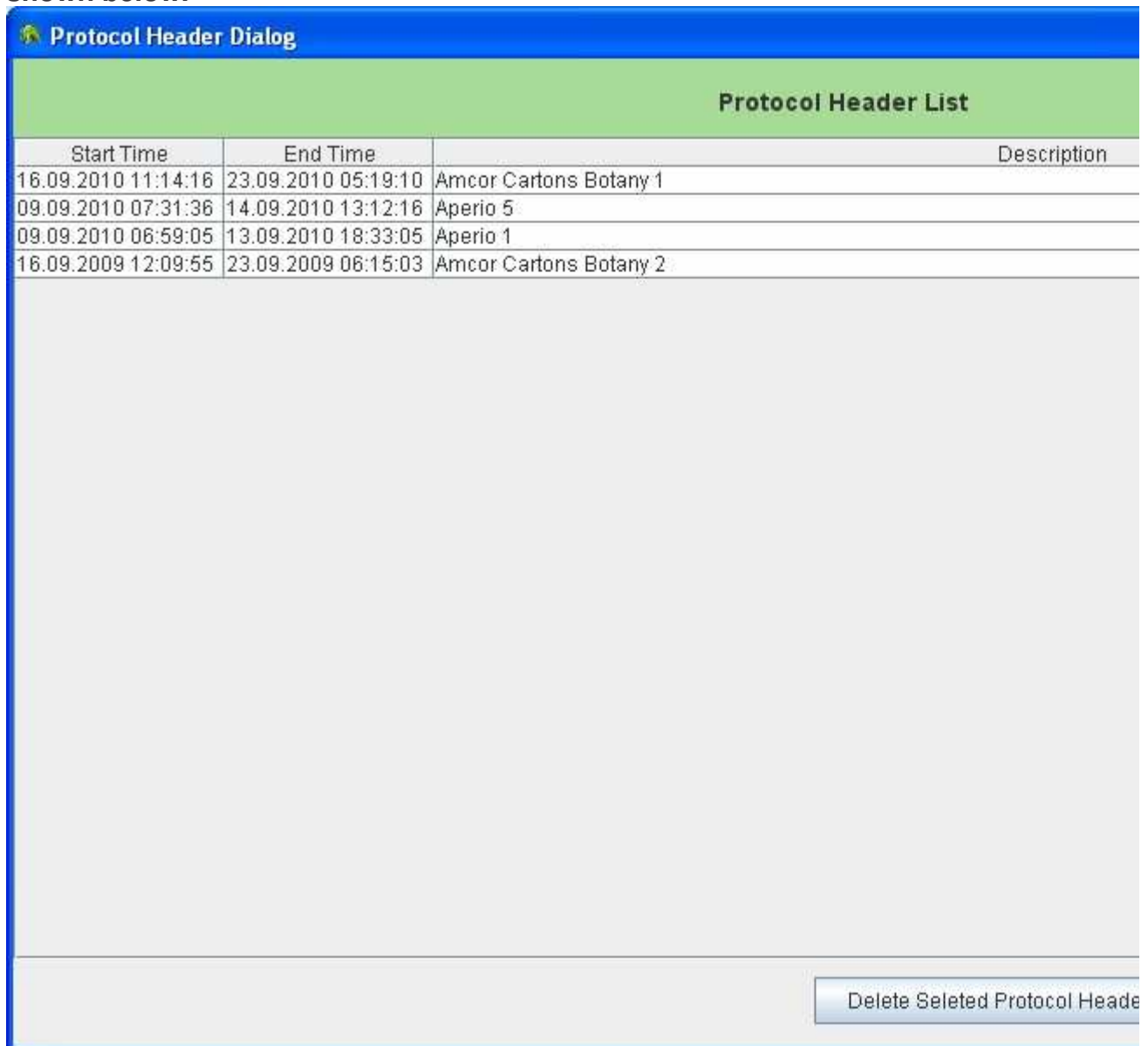
Open a file



File menu

Open a file

Select in the menu <File - Open File> which will pop up the Protocol Header Dialog as shown below.



Select the protocol you want to open and click Select button to open the file.

Select the protocol and click Delete Selected Protocol Header to remove the file from the database.

Select the protocol you want to open and right click it for detail information of the file, as shown below.

Protocol Header Dialog

Start Time	End Time	
16.09.2010 11:14:16	23.09.2010 05:19:10	Amcor Cartons Botar
09.09.2010 07:31:36	14.09.2010 13:12:16	Aperio 5
09.09.2010 06:59:05	13.09.2010 18:33:05	Aperio 1
16.09.2009 12:09:55	23.09.2009 06:15:03	Amcor Cartons Botar

Protocol Header Information

Protocol Header

Start time: 16.09.2010 11:14

End time: 23.09.2010 05:19

Sample rate: 3 seconds

Values Per Channel: 194498

Description: Amcor Cartons B

Channel Information:

1: Velocity	m/s
1: Flow	m ³ /min
1: Consumption	m ³
2: Dew point	°Ctd
3: Pressure 40 bar	bar

Exporting data



Exporting data

Select in the menu <File - Export Data> which will pop up the Protocol Header Dialog as shown below.

Protocol Header Dialog		
Protocol Header List		
Start Time	End Time	Description
16.09.2010 11:14:16	23.09.2010 05:19:10	Amcor Cartons Botany 1
09.09.2010 07:31:36	14.09.2010 13:12:16	Aperio 5
09.09.2010 06:59:05	13.09.2010 18:33:05	Aperio 1
16.09.2009 12:09:55	23.09.2009 06:15:03	Amcor Cartons Botany 2

Select the file you want to export and click Export to get Export Option as shown below.

Export Option	
You have following options:	
<input checked="" type="radio"/>	Export all data to excel file(s).
<input type="radio"/>	Select a certain time period
<input type="button" value="OK"/> <input type="button" value="Cancel"/>	

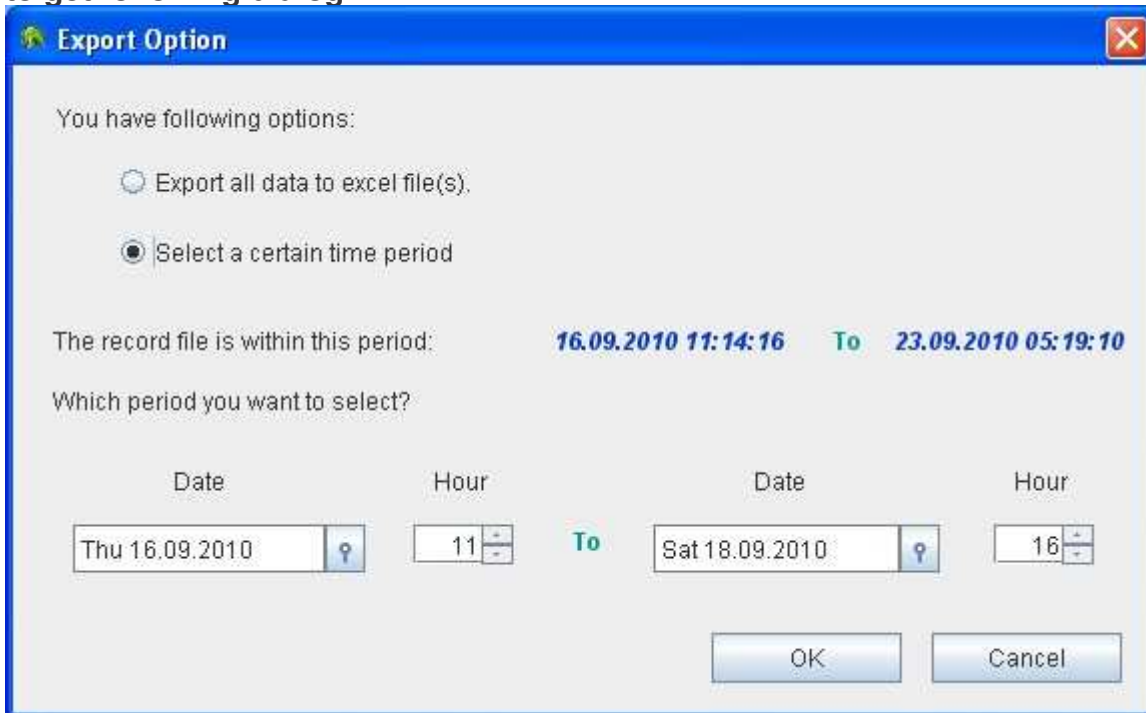
Export all data to excel file(s)

All the data will be exported to a excel file or several excel files. It depends on how many values the file contains. If the file have more than 65,536 lines, it will be exported to several excel files. Otherwise, it will be exported as one excel file.

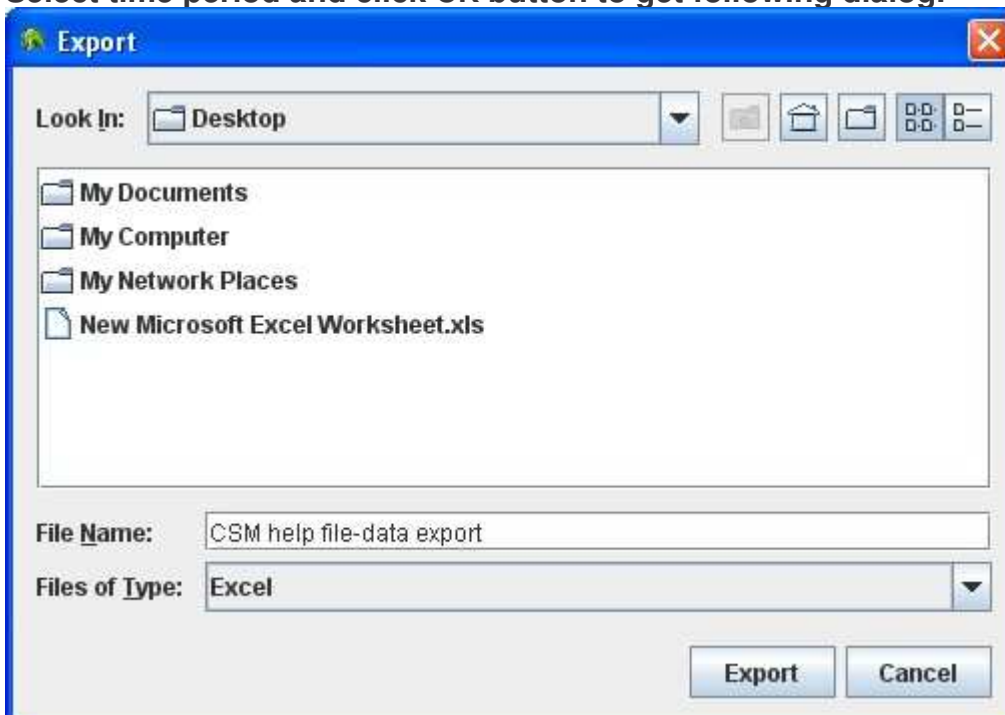
Select a certain time period

User can also export the data in a certain time period. Click Select a certain time period

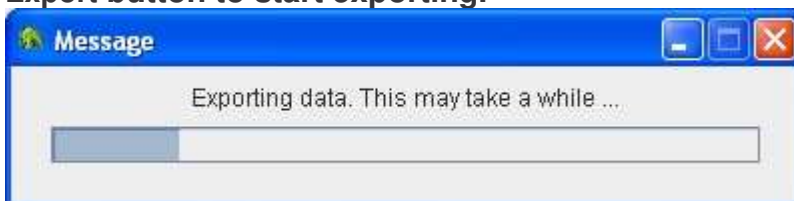
to get following dialog.



Select time period and click OK button to get following dialog.



Select a folder to place the excel file(s) and input a file name for the file. Then press Export button to start exporting.



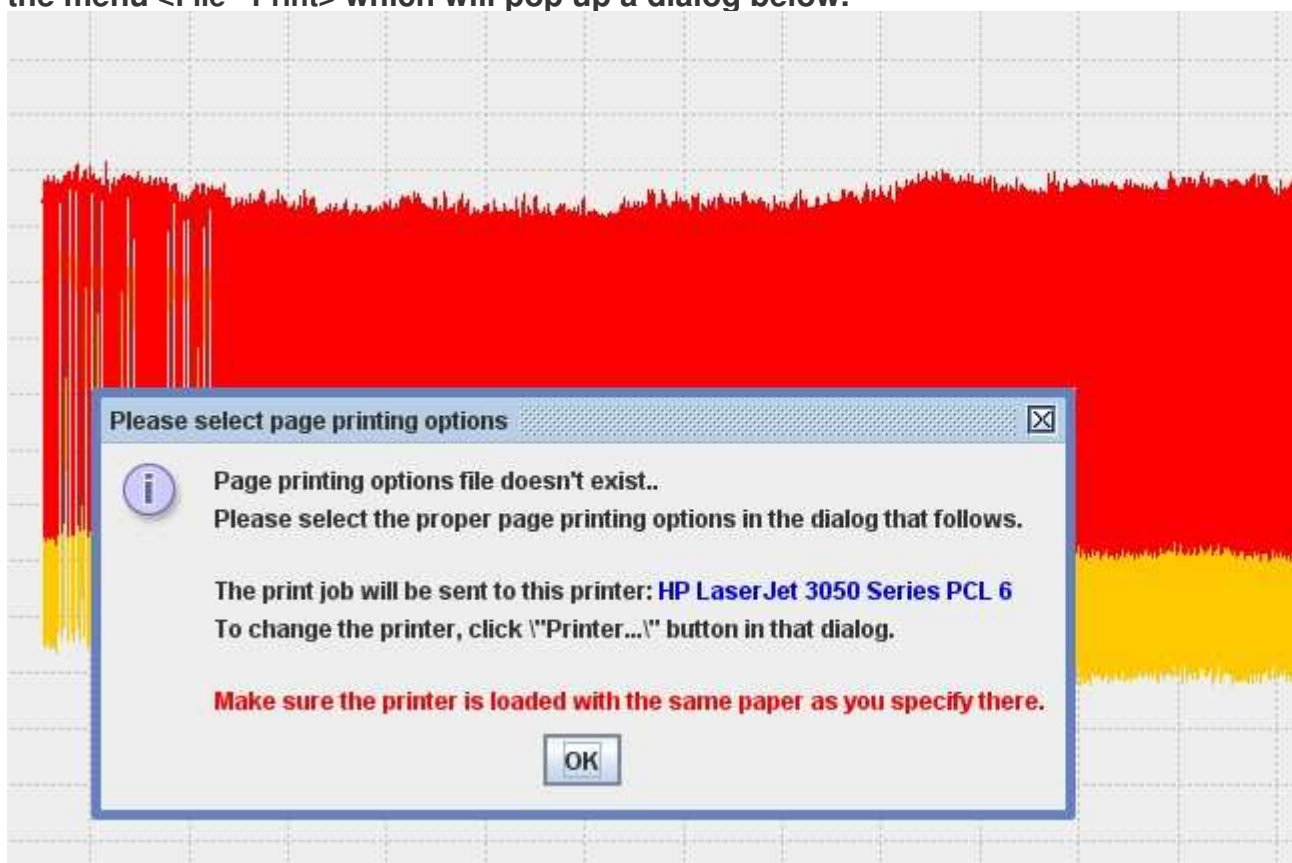
Printing



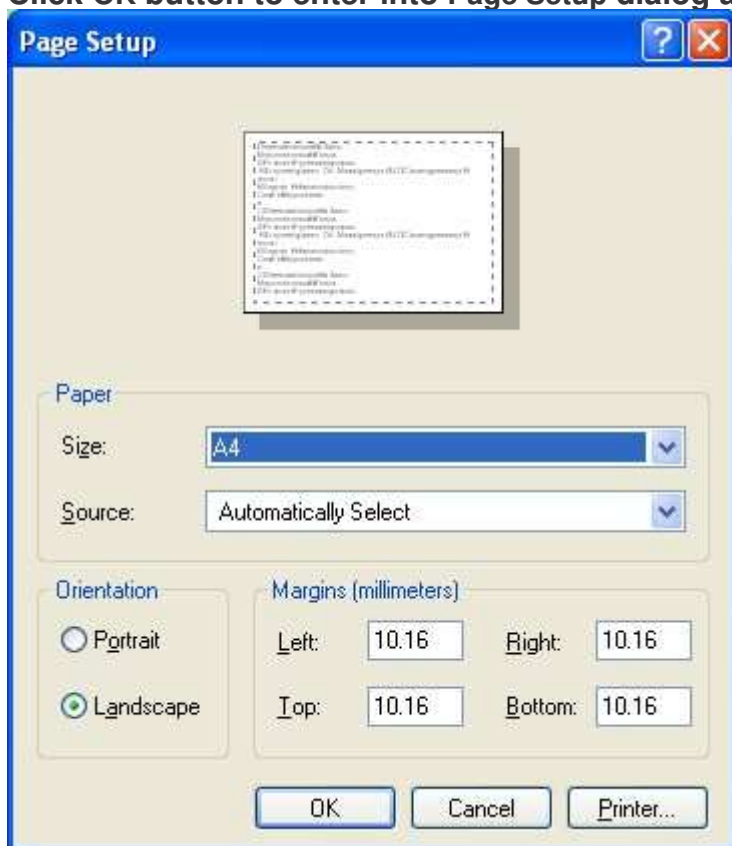
Printing

This function is used to print current graphic that is show on the screen. Select in

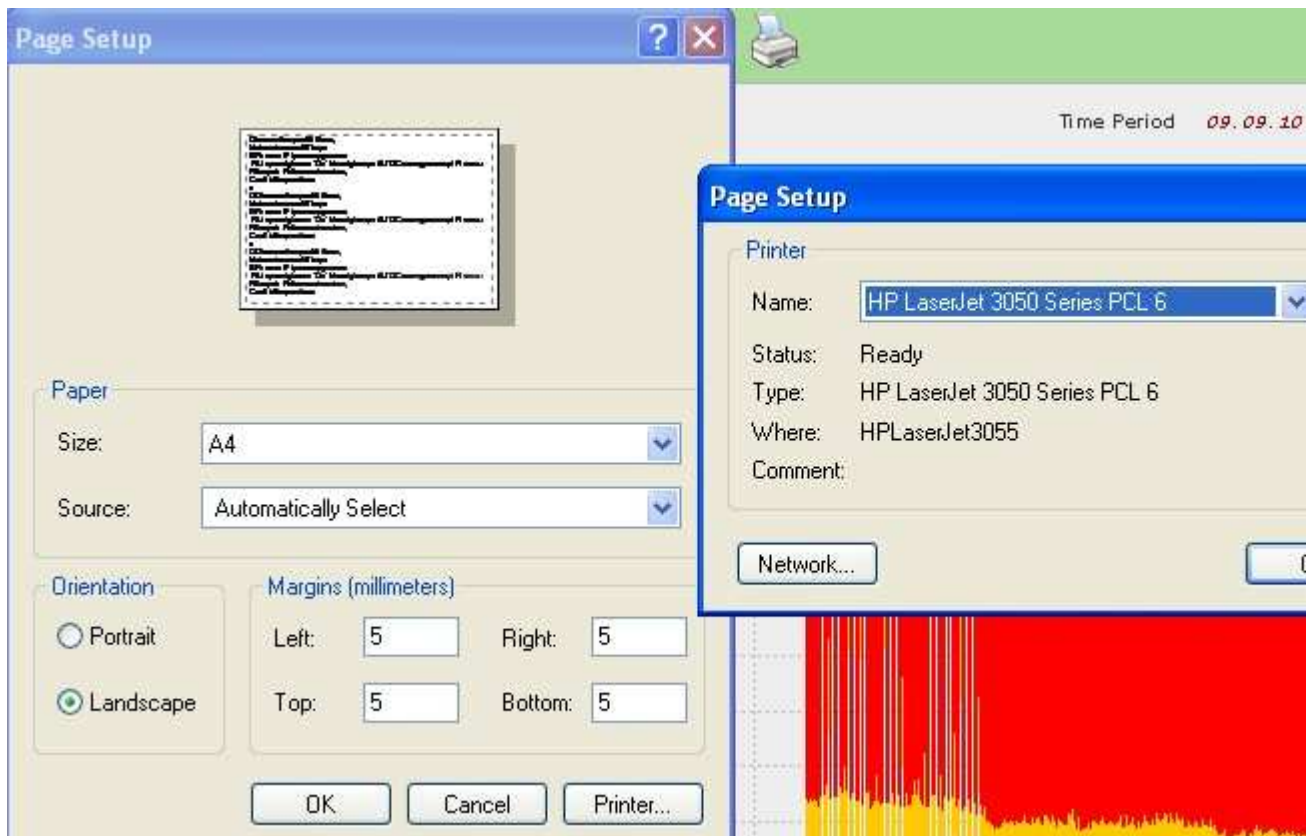
the menu <File - Print> which will pop up a dialog below.



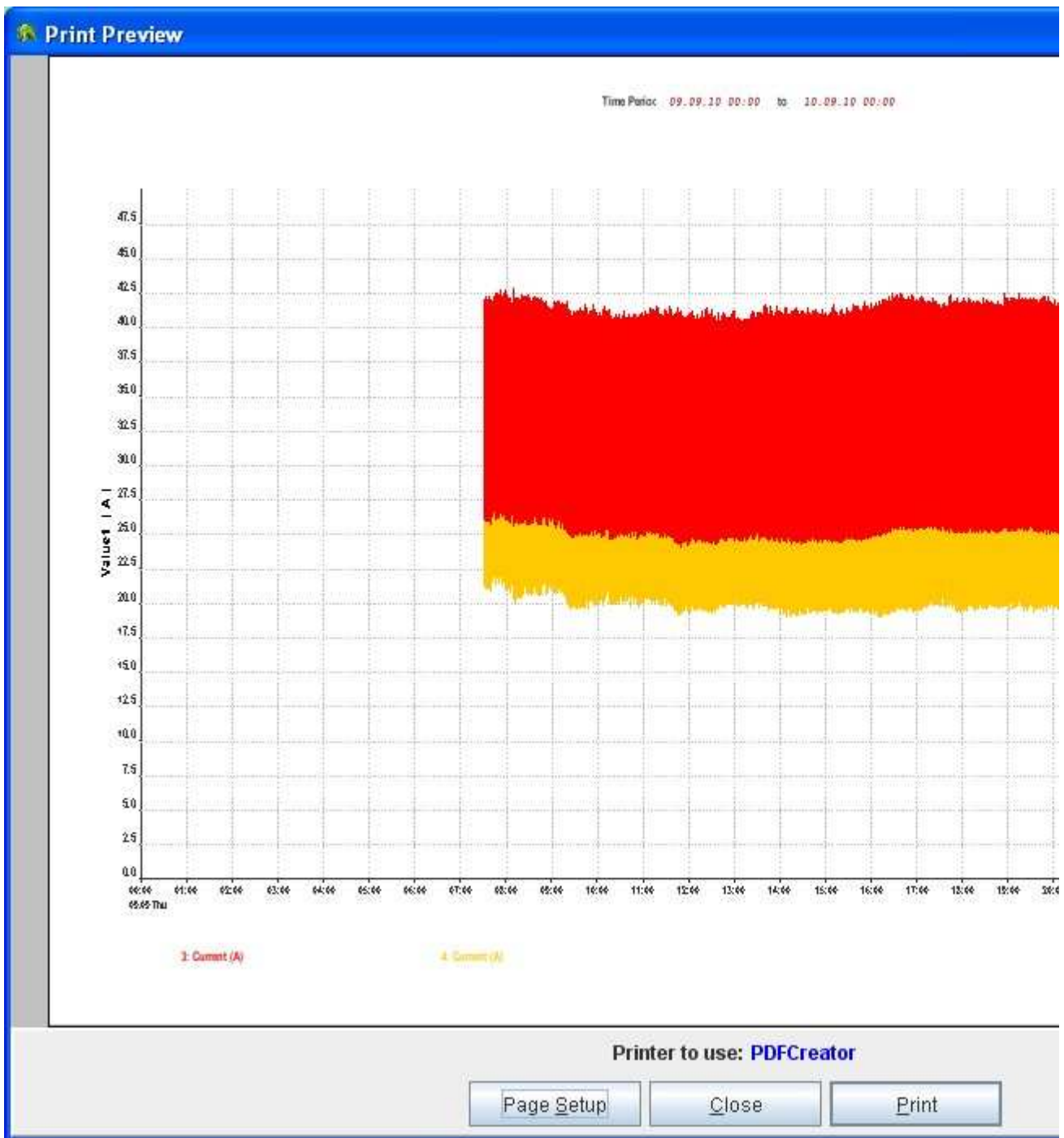
Click OK button to enter into Page Setup dialog as shown below.



Paper	Select the size of the paper
Orientation	In default software selects Landscape
Margins	User can adjust margins of the paper
Printer	Select your printer, as shown below



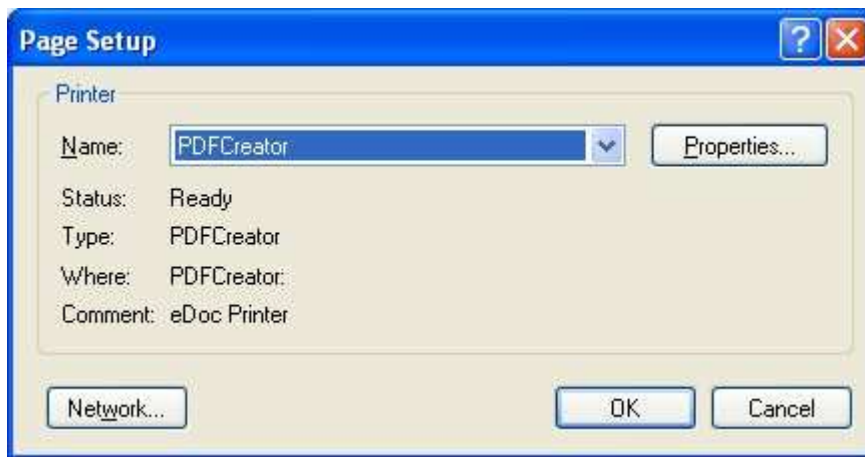
After user completes these settings, CSM-S will pop up a Printing Preview page as shown below.



How to save the graphic as a pdf file?

At printer selecting dialog, select a **pdf creator** as the virtual printer instead of real printer. The **pdf creator** will be add in the printer selection list after you install an application software.

There are a lot of such application softwares available on Internet for free downloading. User can easily find one by searching **pdf creator** in searching engine.



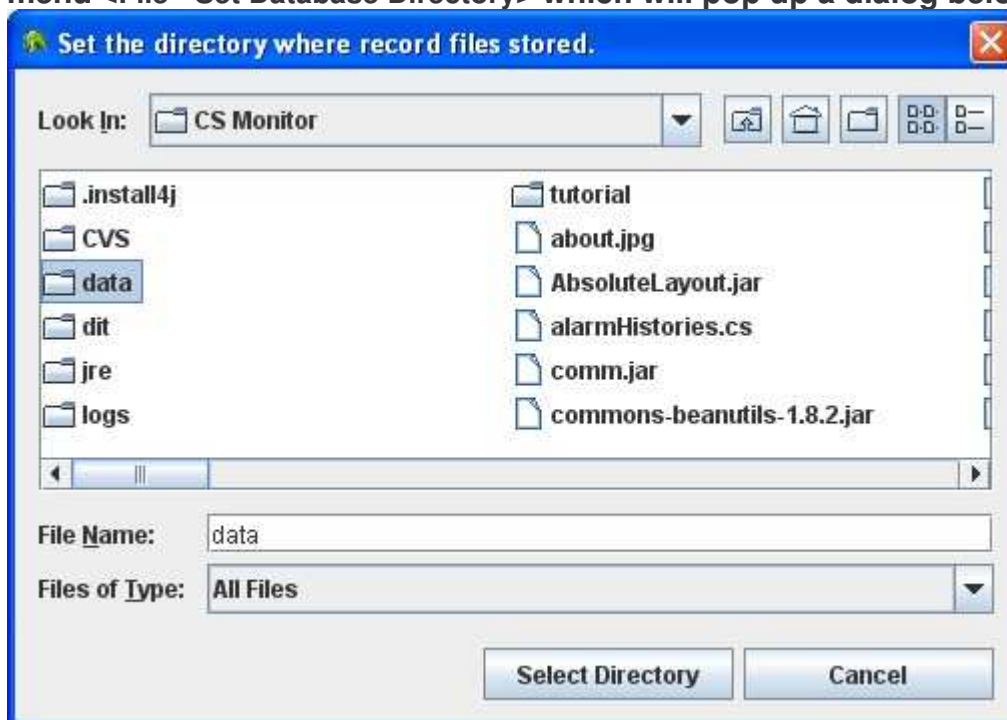
Set Database Directory



Set Database Directory

CSM-S save user's data file as .csd file in a folder. The folder can be configured by user. CSM-S will ask user to select it when he install the software at first time. If user don't want to change it, CSM-S will set the data folder at **C:\Program Files\CS Monitor\data** automatically.

After user starts CSM-S, he can easily set data folder at other directory. Select in the menu **<File - Set Database Directory>** which will pop up a dialog below.



Select the folder which user wants to use as the data folder and press Select Directory or double click the desired folder.

A message will pop up and tell you the location of data folder.



Registration basic



Software registration

Registration basic

CSM-S provides 45 days trial period. All software functions are available during this period. After the trial period is expired a registration is required. The registration process needs a s/n (serial number) which you can find on the delivery documents from your vendor or on the CD.

After CSM-S is registered it has 12 months free of charge upgrade period. 12 months later, upgrade code has to be purchased for upgrading.

On-line or off-line registration



On-line or off-line registration

On-line registration

If your PC has an Internet connection, it will be easy and fast to register CSM-S. Please select in the menu **<Help - Register Software>** which will pop up the License Information window as shown below. What user needs to do is just input the serial number, company name, user name, Email address and company location into the entry fields, then click **Online Registration** to register it.

License Information

Registration can be done through 2 ways:

1. Online registration

If you have an online connection to internet, this is the easiest and fastest way. Enter the serial number (12 digits the CD and on the shipping documents) plus name, company and email address. Then press the "Online Register" button, the software will be registered.

Online Registration

Your Local ID:	<input type="text" value="5DB5-EEE2-CC87-4BA1"/>	Company Name:	<input type="text" value="CS Instruments"/>
Serial Number:	<input type="text" value="8888"/> - <input type="text" value="8888"/> - <input type="text" value="8888"/> - <input type="text" value="8888"/>	Name:	<input type="text" value="Simon Liu"/>
Email-address:	<input type="text" value="sl@cs-instruments.com.hk"/>	Address:	<input type="text" value="Nanshan, Shenz"/>

Off-line registration

If the PC doesn't have Internet connection, user can register CSM-S off-line. Note down your Local ID (16 bits) which is shown in the License Information Window. Then go to another computer that has Internet connection to visit www.cs-instruments.com.hk/registration. On the web page, input your Local ID, Serial number and other basic information to get the activation key for off-line registration.

CS software registration

LocalID : - - -

SerialNumber : - - -

CompanyName :

UserName :

Email :

Address :

After you get the activation key please start CSM-S and go to **<Help - Register Software>** to open License Information window.

License Information

Registration can be done through 2 ways:

1. Online registration

If you have an online connection to internet, this is the easiest and fastest way. Enter the serial number (12 digits the CD and on the shipping documents) plus name, company and email address. Then press the "Online Registration" button and the software will be registered.

Online Registration

Your Local ID: Company Name:

Serial Number: - - - Name:

Email-address: Address:

2. Offline registration

In case your PC has no online connection, please note down "Your Local ID" which is printed above. From another following web page: www.cs-instruments.com.hk/registration and enter following information into the serial number, company name and email address. Press the "Get Activation key" button. And note down the Activation Key.

Offline Registration

Activation Key:

Input the activation key in the entry field and click **Offline Registration** to finish off-line registration.

Delete registration



Delete registration

This function is helpful for following several cases:

1. To move the software from one PC to another one.
2. To re-install operation system.
3. To upgrade hardware of PC.

On-line delete and register CSM-S on another PC

Please select in the menu **<Help - Delete Activation>** which will pop up another License Information window as shown below.

User can simply delete registration by pressing **Online De-Activation**. The operation will release the license. Then user can register CSM-S on another PC with released license on-line or off-line.

License Information

De-Activation can be done through 2 ways :

1. Online De-Activation

You can de-activate the software in case of moving the installation to another PC by simply pressing the "Online De-Activation" button. This step requires an online connection to the internet.

Online De-Activation

Your Local ID:

Serial Number : - - -

2. Offline De-Activation

In case your PC has no online connection, you can click "Offline De-Activation" button. The software will popup a dialog box to get the de-activation key. Note down your "de-activation key" and go to www.cs-instruments.com.hk/deactivation to complete the offline de-activation. De-Activation key, local ID and serial number to complete the offline de-activation.

Offline De-Activation

De-Activation Key:

Off-line delete and register CSM-S on another PC

User can also delete registration off-line. The very first step is to get the **De-Activation Key** in the License Information window shown above. Then please note down the Local ID, Serial number and De-activation key. These characters are needed for the de-activation process. Next step is going to www.cs-instruments.com.hk/deactivation to de-activate the registration.

CS software de-activation

LocalID : - - -

SerialNumber : - - (12 digits)

De-activation Key :

Then the license is also released. User can register CSM-S on another PC on-line or off-line.

Upgrade



Upgrade

After 12-month free upgrade period expired, to upgrade your CSM-S you need to buy a upgrade code from local authorized distributor of CS Instruments. With the upgrade code you can download a new release of CSM-S from our homepage and install it on you computer. The old installation will be covered.

After 12-month free upgrade period, when you try to install a new release of CSM-S following dialog will pop up.

License Upgrade Information

Upgrade can be done through 2 ways:

1. Online upgrade

If you have an online connection to internet, this is the easiest and fastest way. Enter the upgrade code Then press the "Online Upgrade" button and the software's licence will be upgraded.

Upgrade Code:

Upgrade Code:

2. Offline upgrade

In case your PC has no online connection, please note down "Your Serial Number" which is printed above. From another PC please visit following web page:
www.cs-instruments.com.hk/upgrade and enter upgrade code into the dialog. Press the "Get Activation key" button. And note down the Activation Key.

Activation Key:

You need to input correct Upgrade Code to continue the installation.
 Please follow the instructions in the window to do upgrade online or offline.



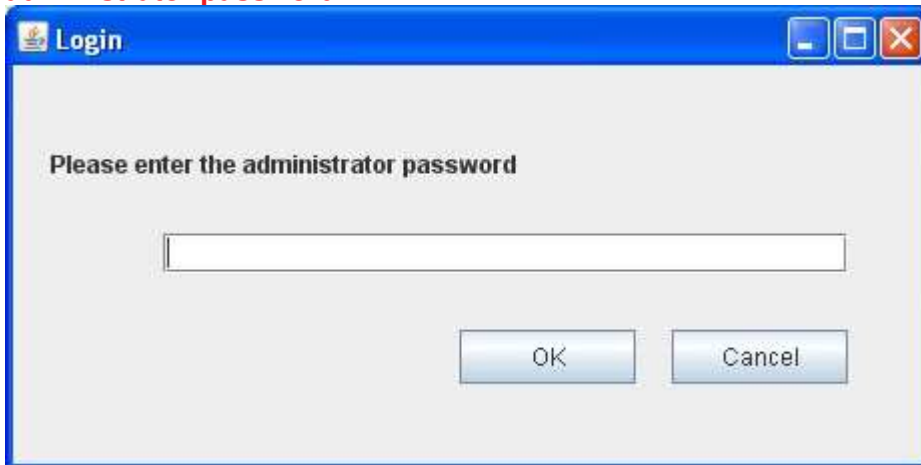
Data backup

Data backup

CSM-S has a data backup system to protect user's data from accidentally loss, due to PC power failure, operating system broken down and etc.



Please click Yes if you want to resolve the problem. CSM-S will ask user to input administrator password.



CSM-S will give user three choices to select. User can choose to delete the data or recover it.

